



*Working together to protect all Kansans from vaccine-preventable disease.*

# IKC REGIONAL MEETINGS

April 22-25

Garden City | Wichita | Pittsburg | Topeka | Lenexa



 @immunizekscoalition  @immunizekscoalition  @ImmKSCoalition

# THANK YOU

## Regional Meeting Sponsors





# WELCOME + INTRODUCTIONS

*Geovannie Gone, LMAC, MPH*

*Executive Director*

*Amanda Applegate, PharmD, BCACP*

*IKC Chair*

**Mission:** Working together to protect all Kansans from vaccine-preventable diseases.

## Vision Statement + Priority Areas

### VISION STATEMENT

To protect all Kansans from vaccine-preventable diseases by working with communities to ensure equitable vaccine access for all people.

To be the trusted resource for evidence-based information to support immunization decision-making for individuals, families, and policy makers.

### THREE PRIORITY AREAS

- 1 Strengthening vaccine confidence through education, awareness, and partnerships with trusted community sources.
- 2 Increase child, adolescent, and adult vaccination rates and vaccine access, with a particular focus on gaps in a current community.
- 3 Health equity



# IKC OVERVIEW & RESOURCE HIGHLIGHTS

*Lucy Waite*

*Patricia Fierro*

*Marixendra Alvarez*

*Leonor Ramos-Salamanca*

***Community Health  
Specialists***

# IKC Migrates to NEW Member and Event Management Software Neon CRM and to Registration Model

- Provides a newer and better way to engage with members and manage our memberships as our coalition continues to grow!
- Exhibitor sign-up and payment, donations, and most registrations now routed through Neon CRM!
- Soon, all members will be receiving an email to create their password and log into their Neon account.
- Stay tuned for additional details as all items are non-member facing at the moment.
- **All events now have registration links (we no longer send blanket calendar invites due to our size)**



# IKC STRATEGIC TEAMS

## EDUCATION AND AWARENESS

## POLICY

Heather Braum, MLS

## IMPROVED SYSTEMS PERFORMANCE

## HEALTH EQUITY

Sarah Good, MHA

Jaclyn Miller, LMSW

## FUNDING AND GRANT DEVELOPMENT

Strategic teams will meet next at the annual meeting, unless special meetings are called before then. Everyone is encouraged to engage with a team and attend a team breakout at our full coalition meetings!

# 2023-2024 BOARD OF DIRECTORS



## **Chair**

Amanda Applegate,  
PharmD, BCACP



## **Chair Elect**

Brandan Kennedy, MD,  
FAAP, FABPM



## **Immediate Past Chair**

Kelly Sommers, BSN, RN



## **Treasurer / Secretary**

Kimberly Whitaker, RN



## **Health Equity Committee Chair**

Jaclyn Miller, LMSW



## **Policy Team Chair**

Heather Braum, MLS



## **Education and Awareness Team Chair (Interim); Grants and Funding Development Team Chair (through March 2024)**

Susan Wood, RN, BSN



## **Improved Systems Performance Team Chair**

Sarah Good, MHA



## **KDHE Representative**

Jaime Gabel, MPH

*Interested in  
an IKC Board  
position?*





# RECOGNIZING A DECADE OF INVOLVEMENT AND 6 YEARS OF LEADING IKC



## **Susan Wood, RN, BSN**

Chair Terms (2018-2021)

Education & Awareness Strategic Team Chair (2021-2024)



***For your leadership!***

# MEET OUR TEAM

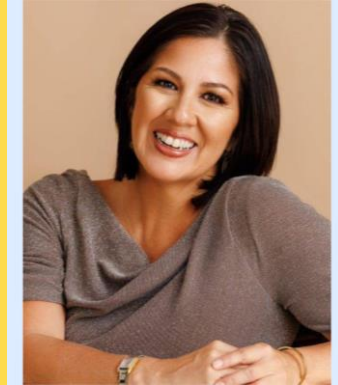
## Community Health Specialists



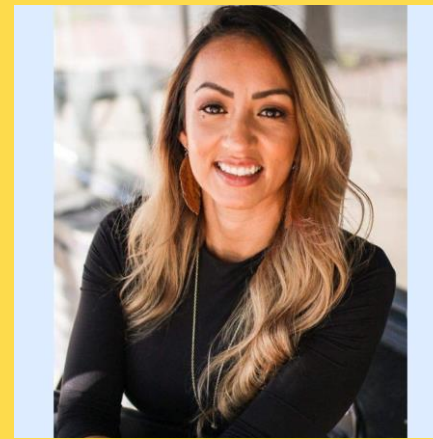
**Marixendra Alvarez**  
Sedgwick County



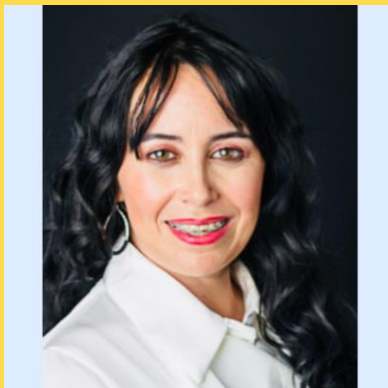
**Leonor Ramos-Salamanca**  
Wyandotte & Johnson Counties



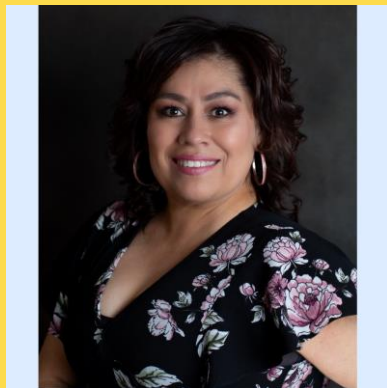
**Immunization Program  
Manager**  
**Monique Garcia, MBA**



**Executive Director**  
**Geovannie Gone,**  
LMAC, MPH



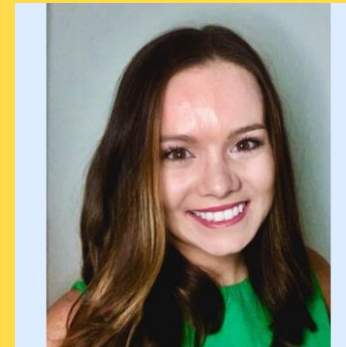
**Patricia Torres**  
Seward County



**Lucy Watie**  
Grant County



**Connie Satzler**  
Senior Operations Manager



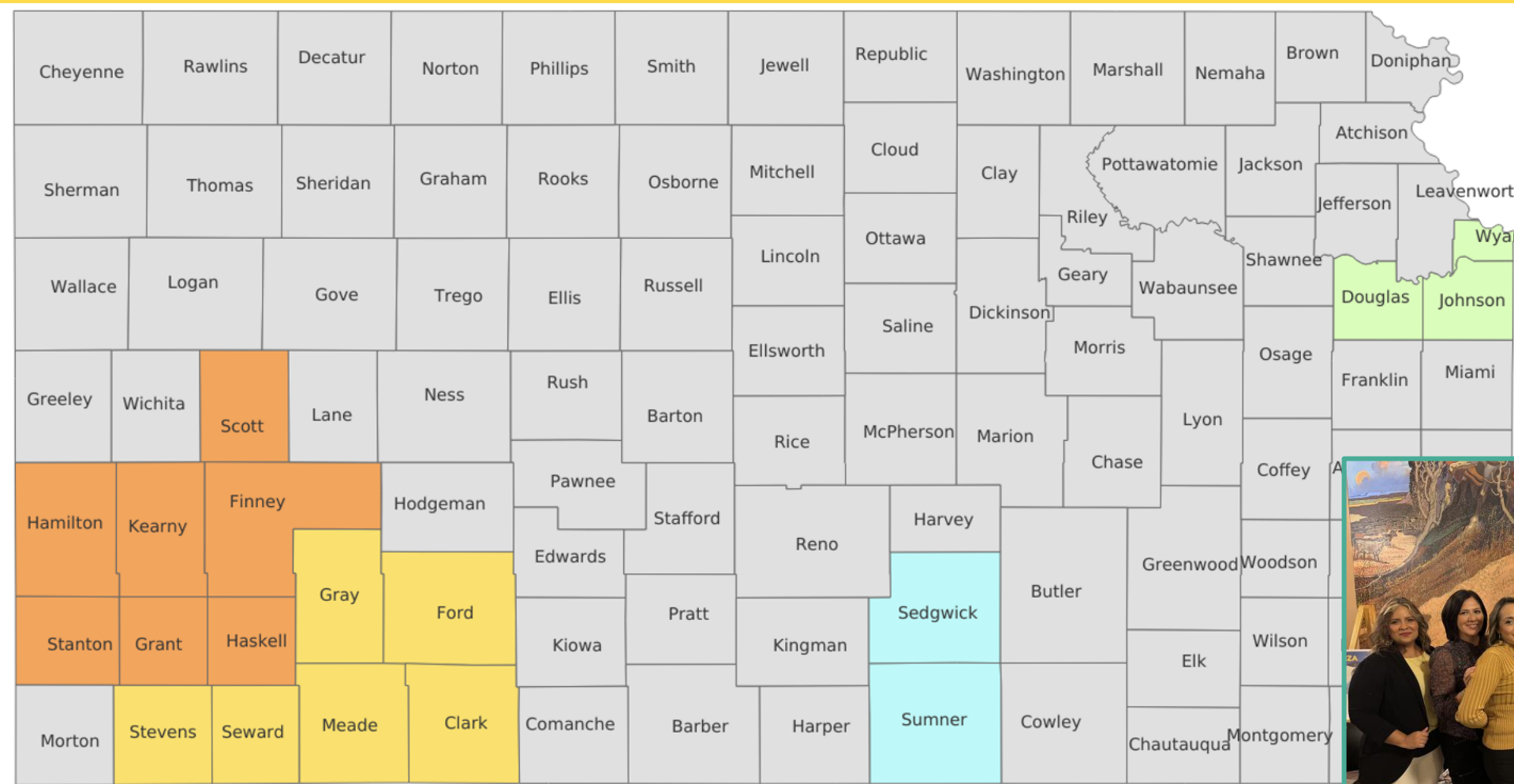
**Paige Lewis**  
Communications Lead



**Greg Gwynn**  
Website Developer

**Additional staff support provided by  
EnVisage Consulting, Inc.**

# REACHING COMMUNITIES ACROSS THE STATE



- Southwest KS Area - Lucy Watie
- Southwest KS Area - Patricia Torres
- Wichita Area - Marixendra Alvarez
- Kansas City Area - Leonor Ramos



# REACHING COMMUNITIES ACROSS THE STATE

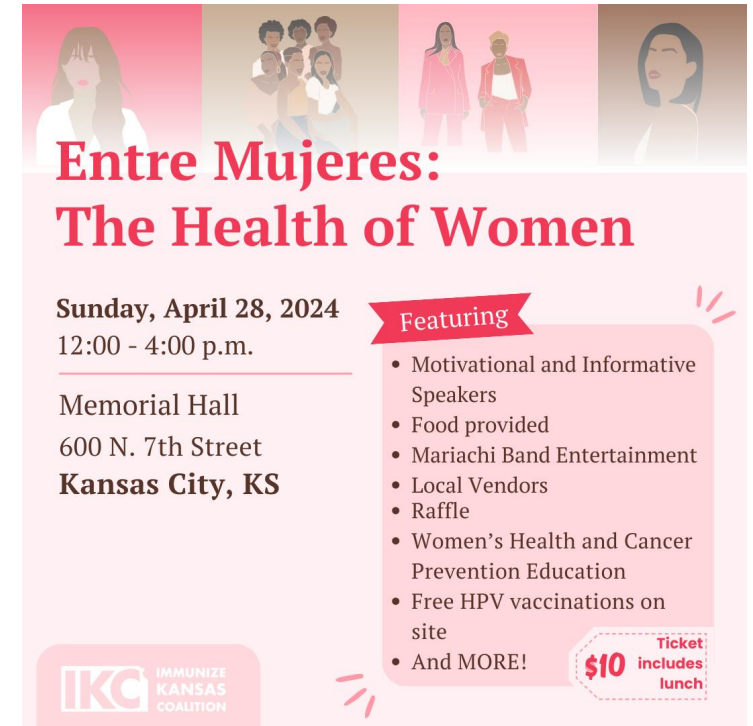


# KEY INITIATIVES

## Entre Mujeres: The Health of Women

- Sunday, April 28th, 2024
- 12:00 - 4:00 p.m.
- Memorial Hall, Kansas City, KS

An empowering conference focusing on the health of women. It brings an engaging approach to educate all women on preventive health measures for themselves and their children, including prenatal care, maternal/infant health, and health screenings. Women will learn how we can work together to prevent infant mortality, how to protect themselves against breast cancer, and about the HPV vaccine's proven protection against six HPV-related cancers, including cervical cancer.



The poster features a header with four icons: a woman's face, a family, two women in business attire, and another woman's face. Below the header, the event title is in large red font. The date and time are listed in black. A red banner highlights the 'Featuring' section, which lists various activities and speakers. The location is listed below. At the bottom left is the IKC logo, and at the bottom right is a ticket price badge.

**Entre Mujeres:  
The Health of Women**

**Sunday, April 28, 2024**  
12:00 - 4:00 p.m.

Memorial Hall  
600 N. 7th Street  
**Kansas City, KS**

**Featuring**

- Motivational and Informative Speakers
- Food provided
- Mariachi Band Entertainment
- Local Vendors
- Raffle
- Women's Health and Cancer Prevention Education
- Free HPV vaccinations on site
- And MORE!

**IKC** IMMUNIZE KANSAS COALITION

**\$10** Ticket includes lunch

# KEY INITIATIVES

## Vaccination Community Navigator Trainings

- Held throughout March and April in designated counties.
- Trainings in English and Spanish
- Each training featured a different module, highlighting key concepts to enhance vaccine knowledge and confidence among community members.



Module 1: The Past, Present, and Future of Vaccination  
Module 2: The Nuts and Bolts of Vaccines  
Module 3: How to Debunk Misinformation and Bolster Vaccine Confidence  
Module 4: Addressing Social Determinants of Health and Barriers to Vaccination

# KEY INITIATIVES



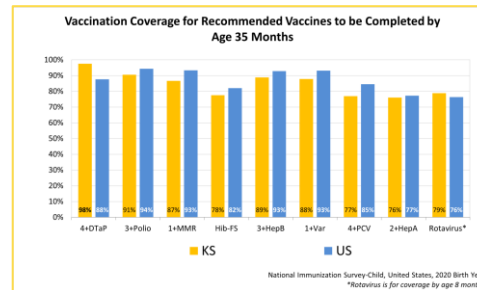
## V for Vaccinated Campaign - Coming Soon!

- New campaign initiative in collaboration with the Office of the Assistant Secretary for Health (OASH).
- Campaign Goals and Focus:
  - Improve knowledge about the benefits of vaccination and the harmful consequences of vaccine-preventable diseases.
  - Improve attitudes about the importance of childhood vaccination, including increasing the number of parents who believe vaccination is important.
  - Increase beliefs in the safety and efficacy of vaccines.
  - Shift perceptions around vaccine support.
  - Drive more parents to vaccinate their children, including catching up on routine vaccinations.

# IMMUNIZEKANSASCOALITION.ORG

Check out previous campaigns and featured resources:

- Vaccine Fears Overturned by Facts Campaign
- Honest Conversations Campaign
- Education Modules
- IKC's Data Dashboard
- IKC Google Calendar



**PROTECTING KANSAS**  
WITH IMMUNIZATIONS

**IKC** IMMUNIZE KANSAS COALITION  
immunizekansascollection.org/educationmodules

**VACCINE FEARS OVERTURNED BY FACTS**

Author by Back to the Vax, Heather Simpson and Lydia Greene  
Presented by Immunize Kansas Coalition

**IKC** IMMUNIZE KANSAS COALITION  
www.immunizekansascollection.org

**VACCINE FEARS OVERTURNED BY FACTS**

The fact is, fears can play a large role in someone's decision to not vaccinate, despite the strong science and case that they are safe, effective, and life-saving. Vaccine Fears Overturned by Facts is a collaboration between Immunize Kansas Coalition (IKC) and the creators of Back to the Vax, Heather Simpson and Lydia Greene. Heather and Lydia are moms who used to be active in the anti-vaccine community, but are now strong voices for vaccination.

Whether you're a parent or a doctor caring for patients - this resource is for you! Here are answers to twelve common questions about vaccine ingredients and safety. We hope these facts help build confidence to trust vaccines with the behind-the-scenes work of keeping us healthy.

Do vaccines cause autism?	<b>No.</b> Studies have shown that there is no link between receiving vaccines and developing autism spectrum disorder.
Is formaldehyde a dangerous vaccine ingredient?	<b>No.</b> Formaldehyde is essential to human metabolism, and is used to build energy for physical and mental daily tasks! Formaldehyde in vaccines does not exceed 0.2 mg, but a newborn will have about 50x that naturally in their body. <b>Fun Fact:</b> There is about 60x more formaldehyde in a pear than in any vaccine!
Is mercury a dangerous vaccine ingredient?	<b>No.</b> Mercury is found naturally in the earth's crust, air, soil, and water. Thimerosal is a mercury-based preservative. It's a safe compound of mercury, used to keep vaccines sterile. In 2001, "mercury" was removed from all childhood vaccines, excluding multi-dose flu vaccines.
Can polysorbate 80 in vaccines open the blood brain barrier?	<b>No.</b> Polysorbate 80 is used as a stabilizer in vaccines, used to keep vaccines effective during storage and transport. However, it's used in quantities nowhere close to causing harm. <b>Fun Fact:</b> We ingest polysorbate 80 everyday! In our food, it's used as a binding agent in peanut butter, ice cream, jelly, and more!
Is aluminum a dangerous vaccine ingredient?	<b>No.</b> Aluminum is used in vaccines as an adjuvant - a component that boosts the immune response to a vaccine. Infants are exposed to more aluminum in breastmilk than in all of their recommended vaccines during the first 6 months of life! <b>Fun Fact:</b> Aluminum is found in fruits, vegetables, meats, and fish because it's the 3rd most abundant element on earth.

**HONEST CONVERSATIONS** on **IMMUNIZATIONS**



# IMMUNIZEKANSASCOALITION.ORG/KEY-RESOURCES

We're continuing to build our outreach educational materials in multiple languages!

English

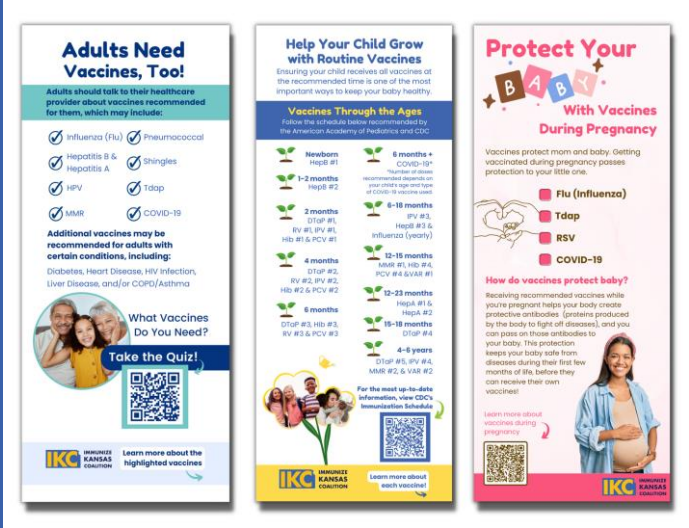
Spanish

Dari

Pashto

Arabic

Haitian Creole



View on IKC's Key Resources Page



# BRIDGE ACCESS PROGRAM INSERT

The Bridge Access program insert helps guide people to free updated COVID-19 vaccines, available through December 31, 2024



Double-sided English/Spanish

# RESPIRATORY SEASON BROCHURE

IKC's Respiratory Season Brochure features COVID-19, Flu, and RSV. Learn about each disease, its symptoms, and how to prevent illness through vaccination.

Available in English and Spanish



View on IKC's Key Resources Page





***Connect with us!***

**Resources and Connection Opportunities**

# WAYS TO BECOME INVOLVED



Become a member or join a meeting as a guest

Read our newsletter

Mark our newsletter as a "safe sender" in your inboxes to not miss any emails!



Share IKC resources and follow us on social media!  
Your engagement on social media helps us reach more across the state.



Request IKC at your organization or community's event, or partner at a vaccination clinic.



Get to know your local representative or senator before Advocacy Day and join us!



# FIND UPCOMING EVENTS ON THE IKC GOOGLE CALENDAR

## National Infant Immunization Week

- April 22-29<sup>th</sup>

## Kansas Immunization Conference

- May 20-23<sup>rd</sup>
- IKC Dinner
  - May 21<sup>st</sup>

## IKC Annual Coalition Meeting

- July 26<sup>th</sup>

## National Immunization Awareness Month/Back to School Vaccines

- August

## IKC Coalition Meeting

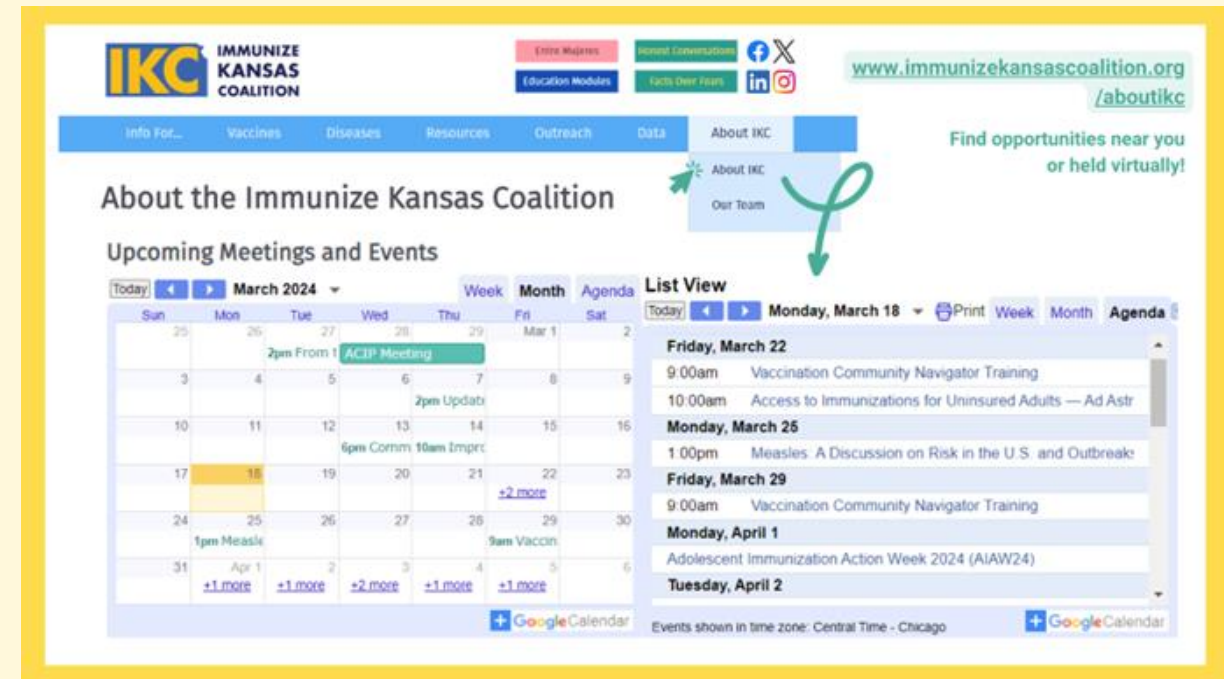
- November 22<sup>nd</sup>

## National Influenza Immunization Week

- Early December

## IKC Advocacy Day





- Late January or early Feb 2025 - Stay tuned!



The calendar is continuously updated with webinars and additional events.

# Engage + Follow IKC on Social Media

## Connect With Us

-  [immunizekansascoalition.org](https://immunizekansascoalition.org)
-  [@immunizekscoalition](https://www.facebook.com/immunizekscoalition)
-  [@immunizekscoalition](https://www.instagram.com/immunizekscoalition)
-  [@ImmKSCoalition](https://twitter.com/ImmKSCoalition)
-  [Immunize Kansas Coalition](https://www.linkedin.com/company/immunize-kansas-coalition)
-  [staff@immunizekansascoalition.org](mailto:staff@immunizekansascoalition.org)



 **immunizekscoalition**  
Immunize Kansas Coalition  
381 followers • 222 posts



**Since 1963, the widespread use of the measles vaccine has led to a greater than 99% reduction in measles cases compared with the pre-vaccine era.**

**Is herd immunity real?**

**SPREAD LOVE NOT DISEASE**

**ROUTINE VACCINES AREN'T JUST FOR KIDS**

**Happy Kansas Day!**

Learn more

Protect your little one against measles!

Ensure your child is up-to-date on recommended vaccines!

Working together to protect all Kansans from vaccine-preventable diseases.



# **Kansas Department Of Health And Environment (KDHE) Epidemiology Overview: Immunizations, Vaccine Preventable Disease Outbreaks, and Data**

Andrea May, MPH and Allison Zaldivar, MPH  
*Kansas Department of Health and Environment*





**Epidemiology Overview:  
Immunizations, Vaccine Preventable Disease Outbreaks and Data  
Andrea May, MPH and Allison Zaldivar, MPH | April 2024**



- Overview of state statutes
- School and daycare requirements
- College and university requirements
- Statewide and local coverage
- Kansas Department of Health and Environment's (KDHE's) role in vaccine-preventable disease (VPD) response
- Global and national VPD current events

- K.S.A. 72-6261 Sets definitions of school board, school, local health department, secretary, and physician.
- K.S.A. 72-6262 Sets requirements and allowable alternatives.
- K.S.A. 72-6265 Allows for exclusion of students who are not in compliance with 72-6262.
- K.S.A. 76-761a Allows colleges and universities to place meningitis policies for vaccination and waivers for student housing.

## **K.S.A. 72-6262 (a) – Requirements**

- Upon enrollment and prior to admission and attendance in a school or a day care program operated by a school, documentation should be presented:
  - Student has completed all vaccination requirements for their grade level
  - Student has completed all appropriate vaccination requirements and has documented proof of disease
  - Student is in the process of completed required vaccinations and has recently received the most appropriate dose in each series
  - Student is non-compliant

## K.S.A. 72-6262 (b) – Exemptions

- As an alternative to the requirements in subsection (a)
  - **Medical Exemption** – required to be signed by licensed physicians annually stating which vaccines the student cannot receive and that the physical condition of the child is such that the tests or inoculations would seriously endanger the life or health of the child
  - **Religious Exemption** – written statement signed by one parent or guardian that the child is an adherent of a religious denomination whose religious teachings are opposed to such tests or inoculations

## K.S.A. 72-6265

- School board is able to adopt a policy that may exclude a pupil not in compliance with K.S.A. 72-6262 then the school board may exclude them from school attendance. Pupil shall be excluded from school attendance under this section until such time as the pupil has complied with the requirements of K.S.A. 72-6262.
- Policy must include written notice to parent or guardian:
  - Indicating the reason for exclusion from school attendance
  - State that the student shall continue to be excluded until the pupil has complied with the requirements of K.S.A. 72-6262
  - Inform the parent or guardian that a hearing thereon shall be afforded the parent or guardian upon request therefor

# Schools and Daycares

- Diseases required to be vaccinated against are listed in [K.A.R 28-1-20 published July 18, 2019 in the Kansas Register](#).
  - School Requirements: Diphtheria, Hepatitis A, Hepatitis B, Measles, Meningitis, Mumps, Pertussis, Poliomyelitis, Rubella, Tetanus and Varicella
  - Day Care Requirements: Diphtheria, *Haemophilus influenzae* type B, Hepatitis A, Hepatitis B, Measles, Mumps, Pertussis, Pneumococcal disease, Poliomyelitis, Rubella, Tetanus, and Varicella
- Vaccination age and number of doses required follows [ACIP standards](#).
- Any case of these diseases (besides pneumococcal disease) start a public health response which may include isolation of ill persons, active surveillance of close contacts, and exclusion of susceptible close contacts from school and day care.

- Requirements including number of doses at each age are published annually for [schools](#) and [day cares](#).
- Upon enrollment, schools are to examine immunization records and exemptions for required elements and required doses.
  - Some districts have designated forms for religious exemptions.
  - Districts may allow a grace period from the start of the school year until exclusions are enforced.
- Presence of an exclusion policy and enforcement of exclusion policy varies greatly across the state.
- Enforcement of requirements is up to each individual school board to enforce.

## **K.S.A. 76-761a**

- Each college and university shall have in place policies and procedures requiring that all incoming students residing in student housing be vaccinated for meningitis. Such policies shall include appropriate waiver procedures for those who refuse to take the vaccine.
  - Colleges or universities set policies and enforcement
  - Only for students residing in student housing



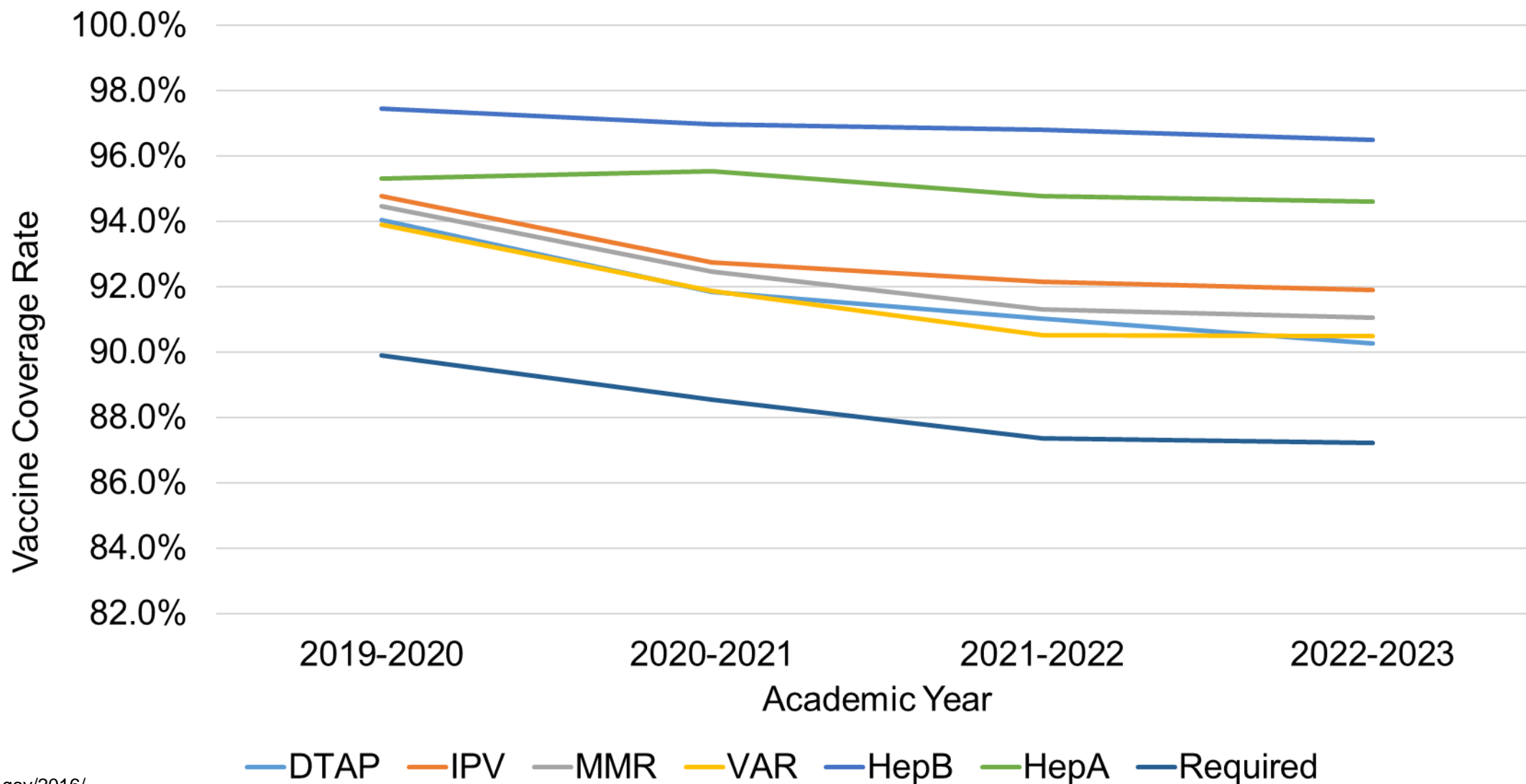
# Annual Kindergarten Assessment

- Schools with a kindergarten class are randomly sampled to:
  - Submit up to 30 student immunization records and complete exemption survey  
or
  - Complete exemption survey
- Sampling set at school district level.
- Exemption survey assesses school exemption numbers, grace period length, and presence of exclusion policy.
- Immunization records analyzed based on 60<sup>th</sup> day after start of school based on date of immunizations.
- Coverage determined at state, county and school district level.

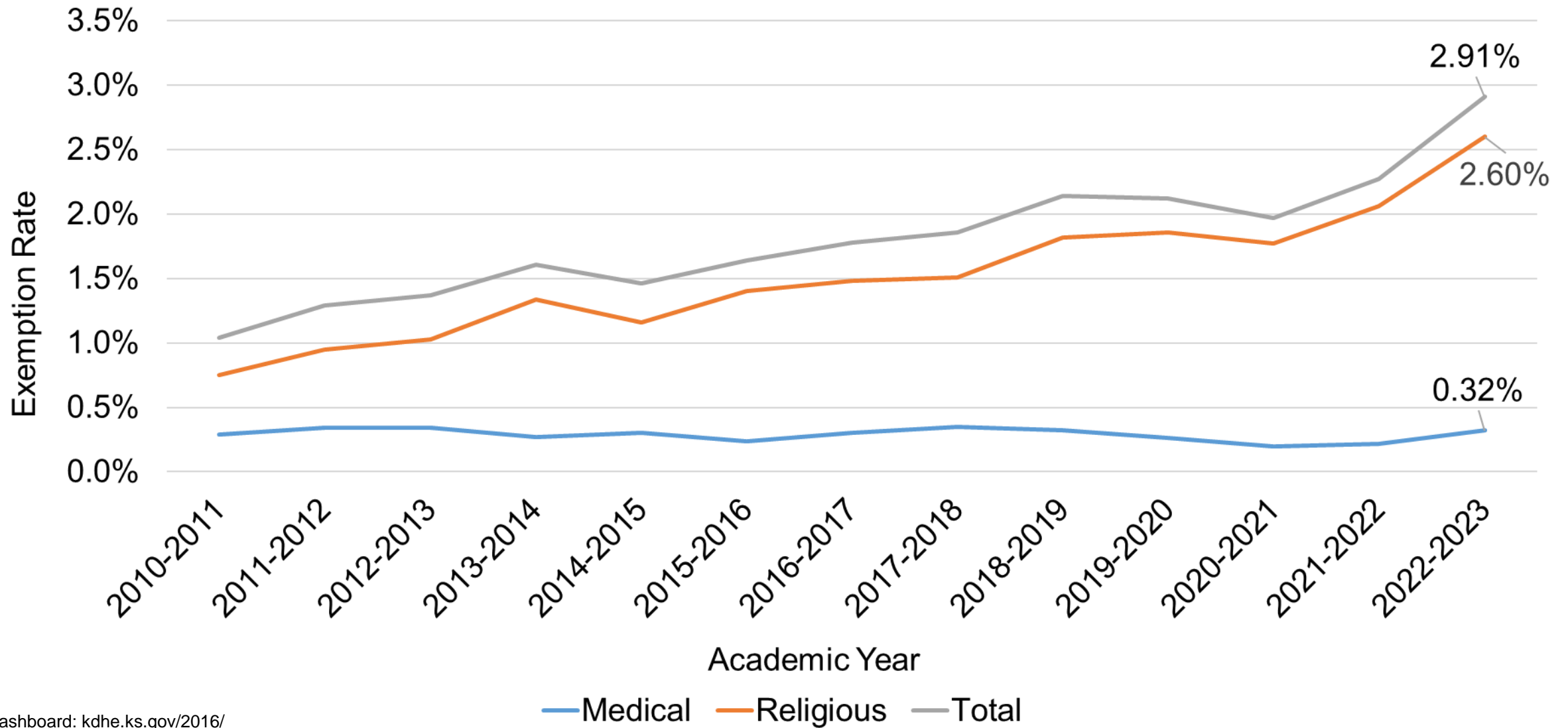
# Kindergarten Vaccine Requirements

Vaccine	Disease Prevented	Number of Doses
DTaP	Diphtheria, Tetanus Pertussis	5 doses or 4 doses considered appropriate if 4 <sup>th</sup> given on or after 4 <sup>th</sup> birthday
IPV	Polio	4 doses or 3 doses considered appropriate if 3 <sup>rd</sup> given on or after 4 <sup>th</sup> birthday
MMR	Measles, Mumps, Rubella	2 doses
Var	Varicella	2 doses or history of disease
HepB	Hepatitis B	3 doses
HepA	Hepatitis A	2 doses
Required	All vaccines required for kindergarten entry	Also referred to as 542232

# Statewide Vaccine Coverage Rate by Academic Year



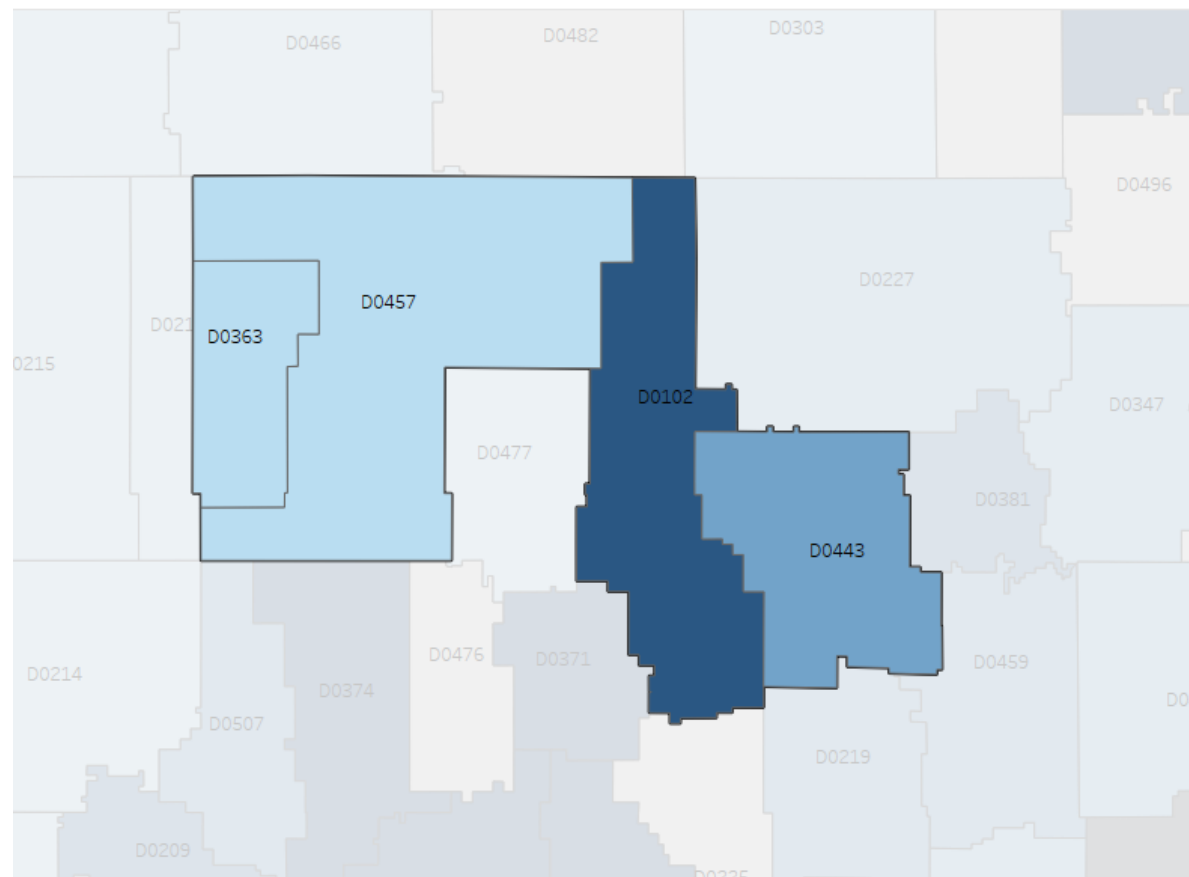
# Statewide Exemption Rate by Academic Year



## District Comparison

- USD 457 Garden City
- USD 443 Dodge City
- USD 363 Holcomb
- USD 102 Cimmaron-Ensign

MMR Vaccine Coverage by School District for 2022-2023 Academic Year

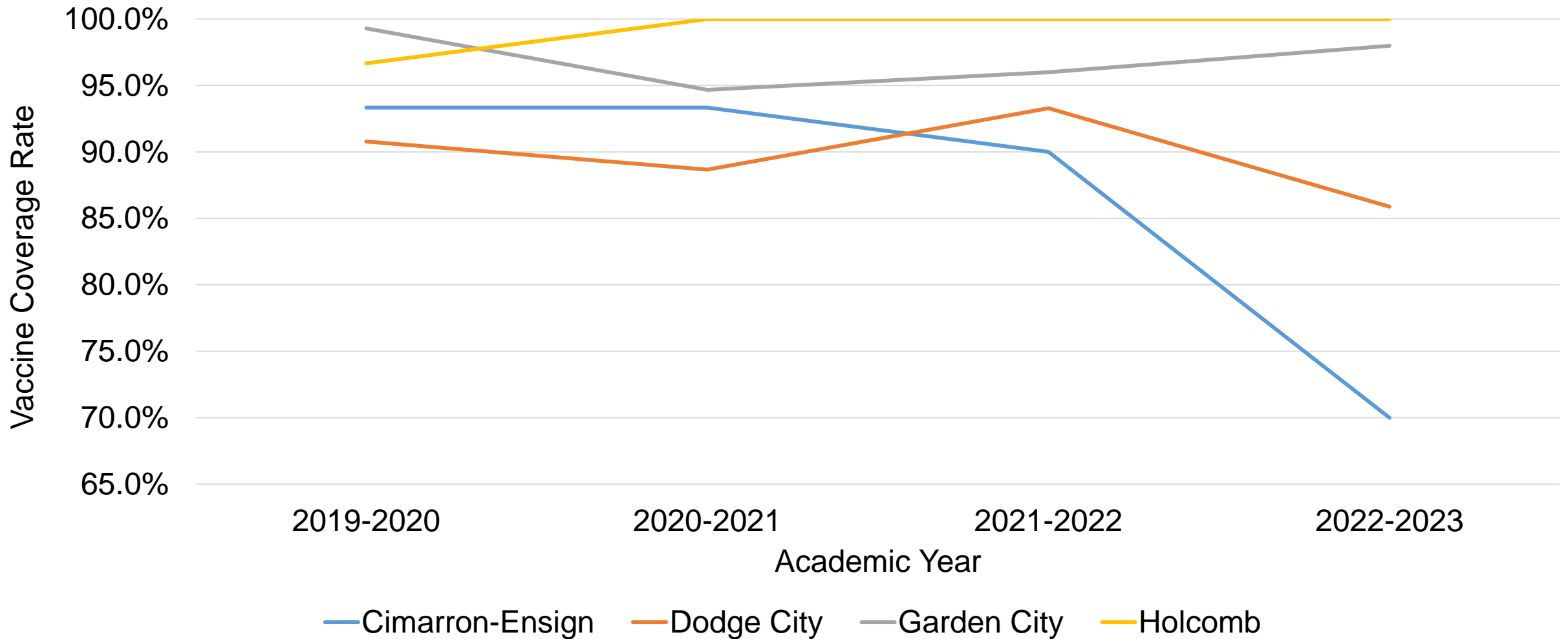


Coverage



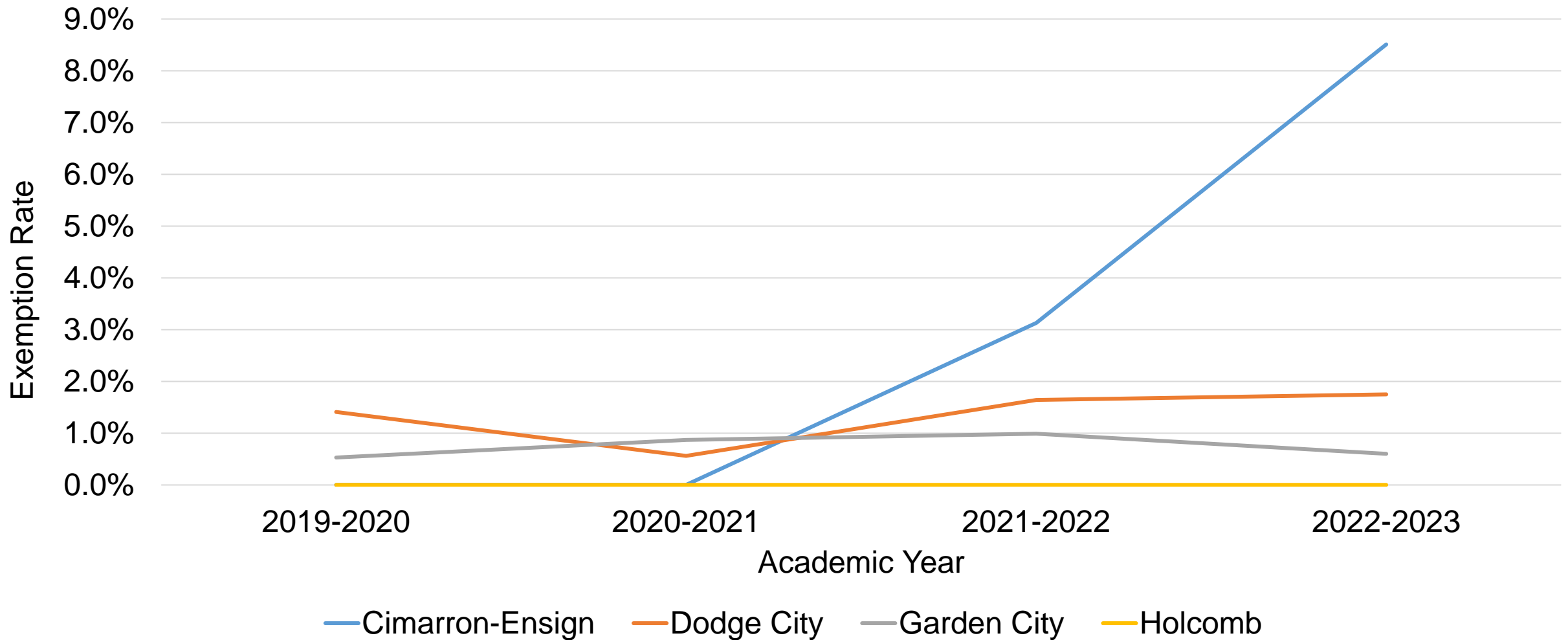
# Local Coverage: Garden City Area

MMR Vaccine Coverage among Garden City Area Kindergartens



# Local Coverage: Garden City Area

## Exemption Rate among Garden City Area Kindergartens

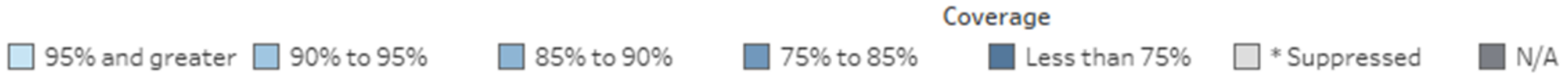
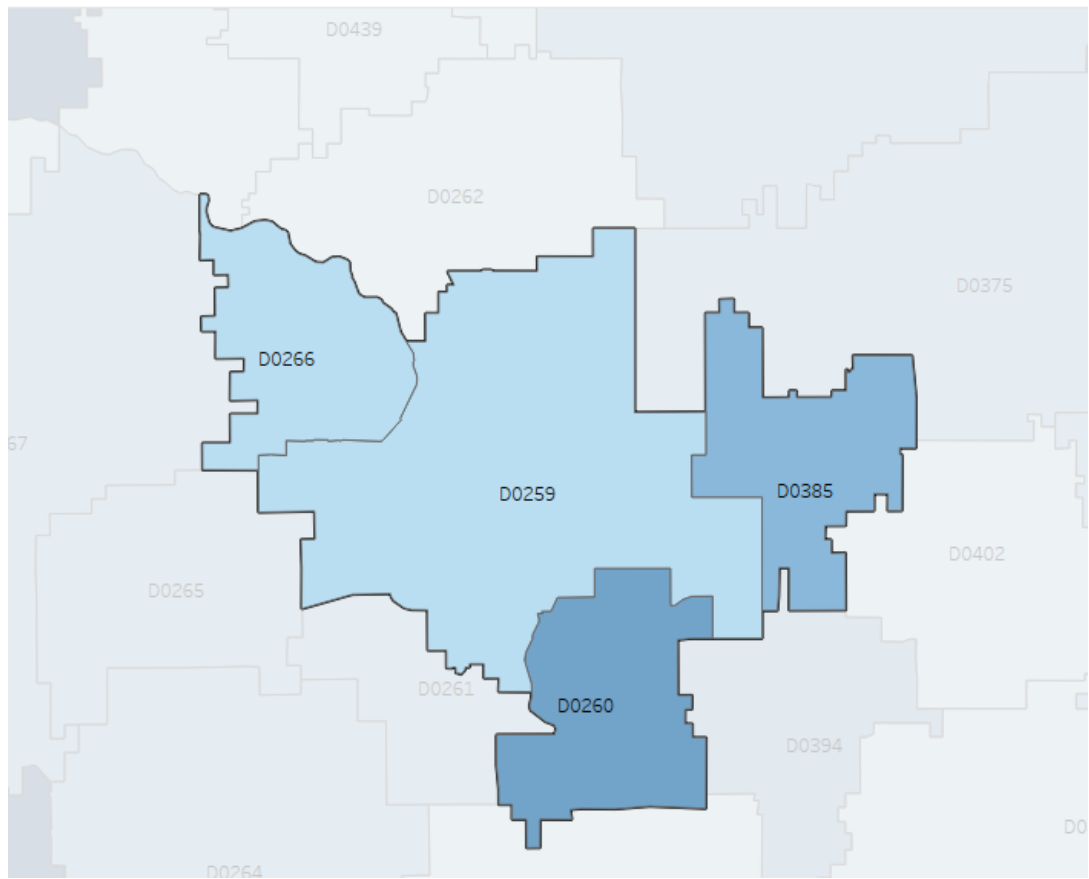


# Kansas Vaccine Requirements - Local Coverage: Wichita Area

## District Comparison

- 259 Wichita
- 385 Andover
- 260 Derby
- 266 Maize

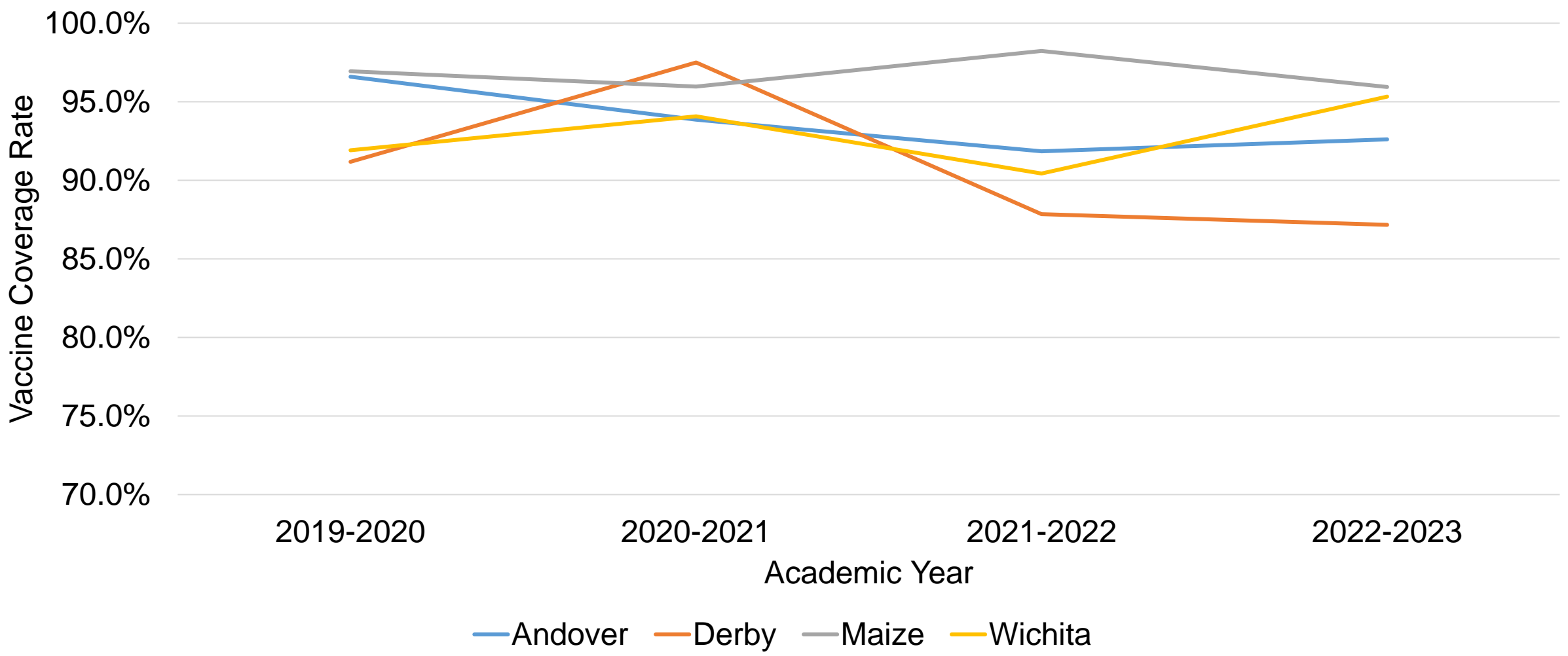
MMR Vaccine Coverage by School District for 2022-2023 Academic Year





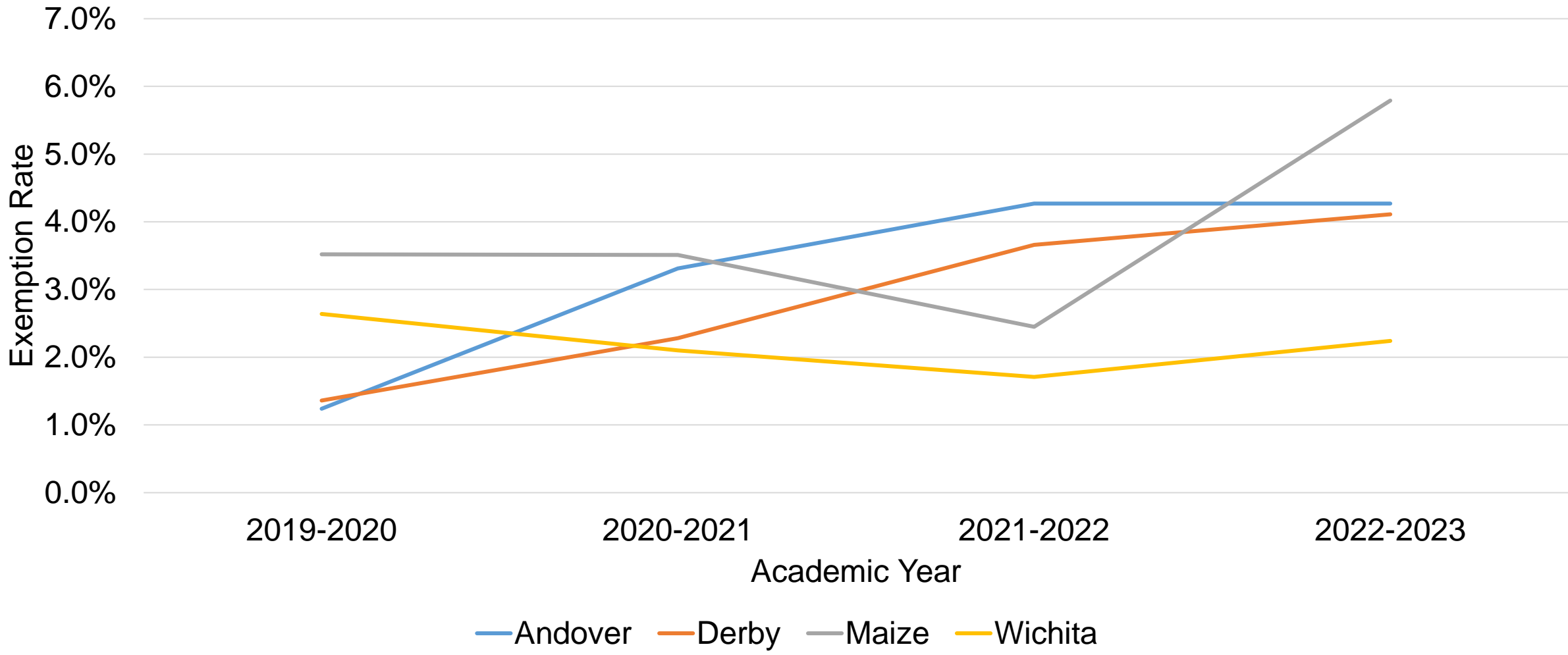
# Kansas Vaccine Requirements - Local Coverage: Wichita Area

MMR Vaccine Coverage among Wichita Area Kindergartens



# Kansas Vaccine Requirements – Local Coverage: Wichita Area

Exemption Rate among Wichita Area Kindergartens

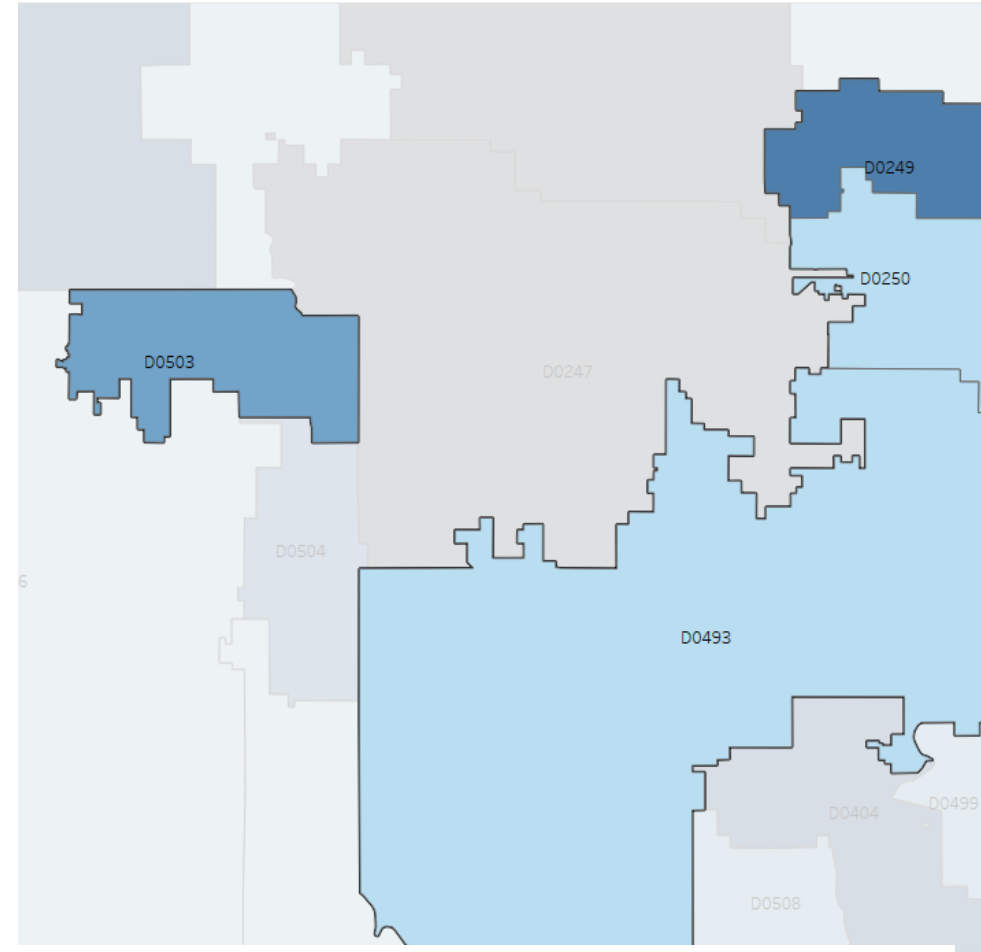


# Kansas Vaccine Requirements - Local Coverage: Pittsburg Area

## District Comparison

- 250 Pittsburg
- 503 Parsons
- 493 Columbus
- 249 Frontenac

MMR Vaccine Coverage by School District for 2022-2023 Academic Year

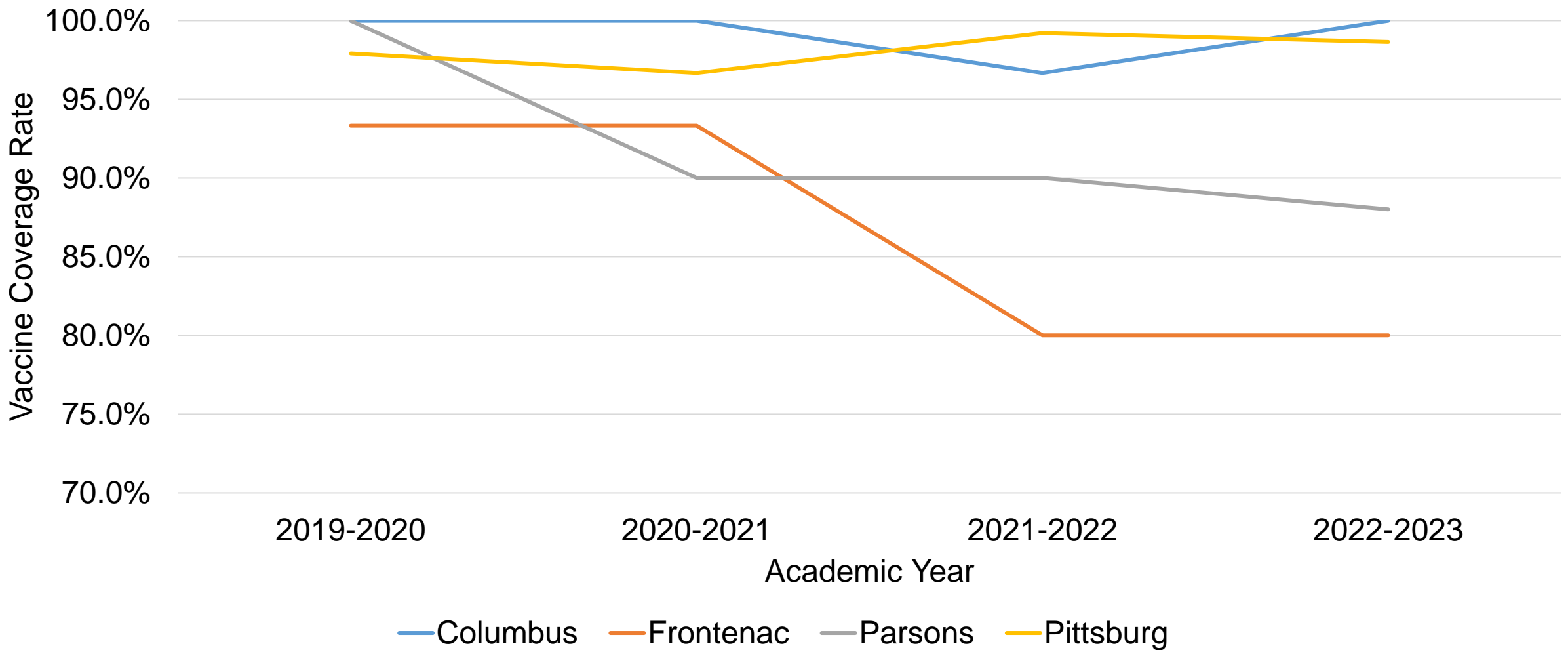


Coverage



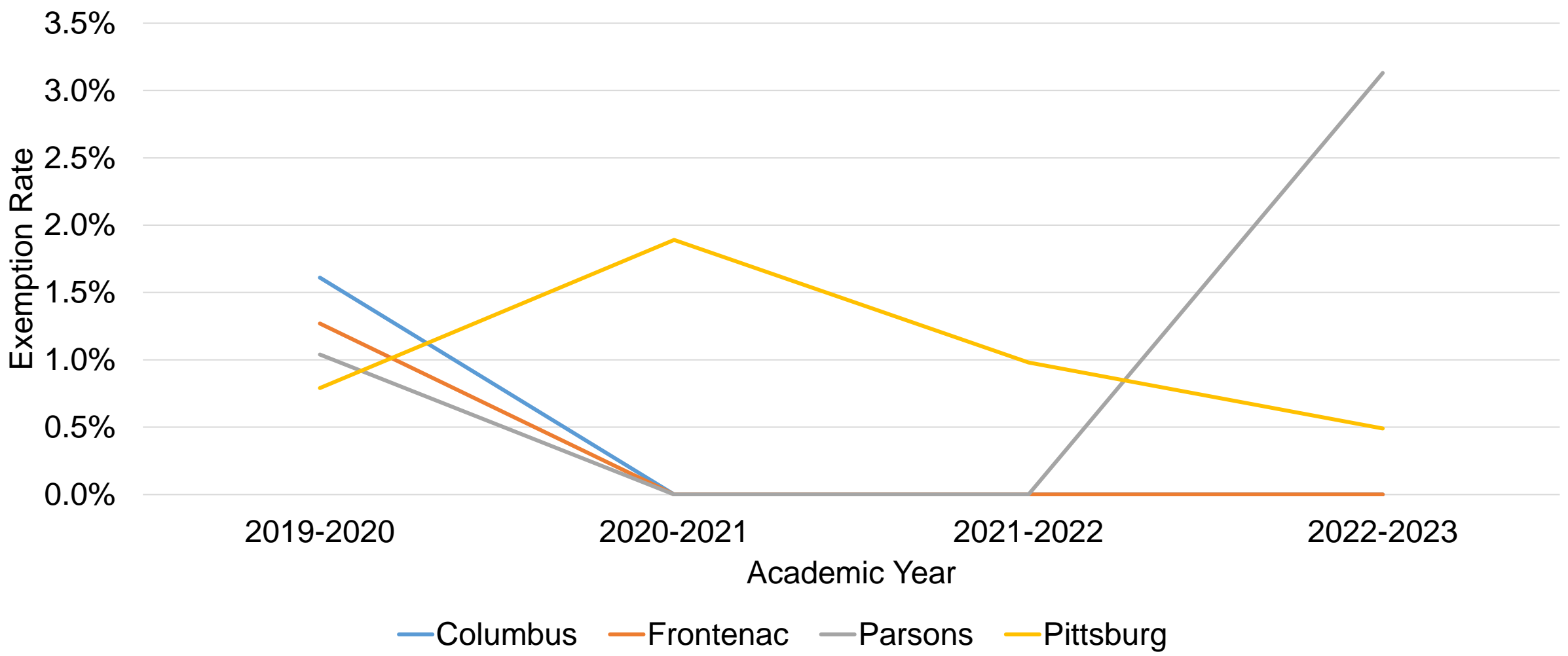
# Kansas Vaccine Requirements - Local Coverage: Pittsburg Area

MMR Vaccine Coverage among Pittsburg Area Kindergartens



# Kansas Vaccine Requirements - Local Coverage: Pittsburg Area

Exemption Rate among Pittsburg Area Kindergartens

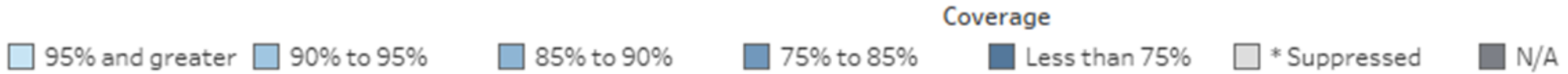
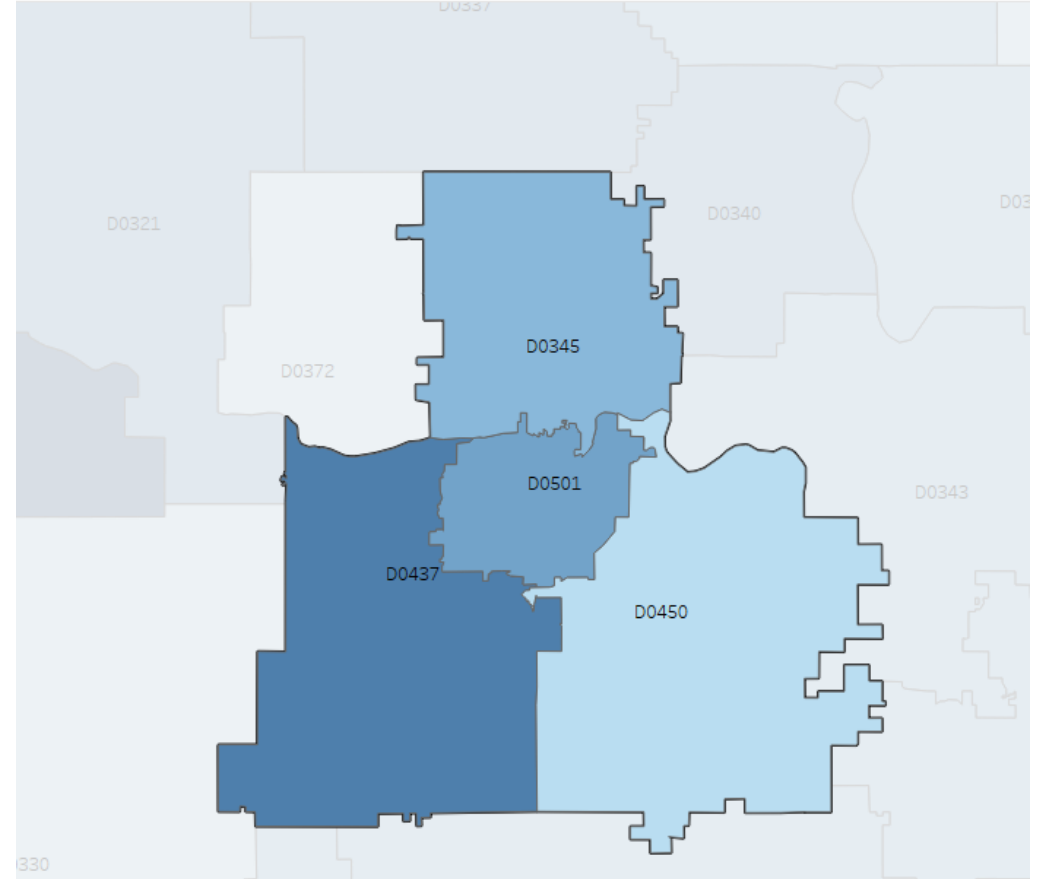


# Kansas Vaccine Requirements - Local Coverage: Topeka Area

## District Comparison

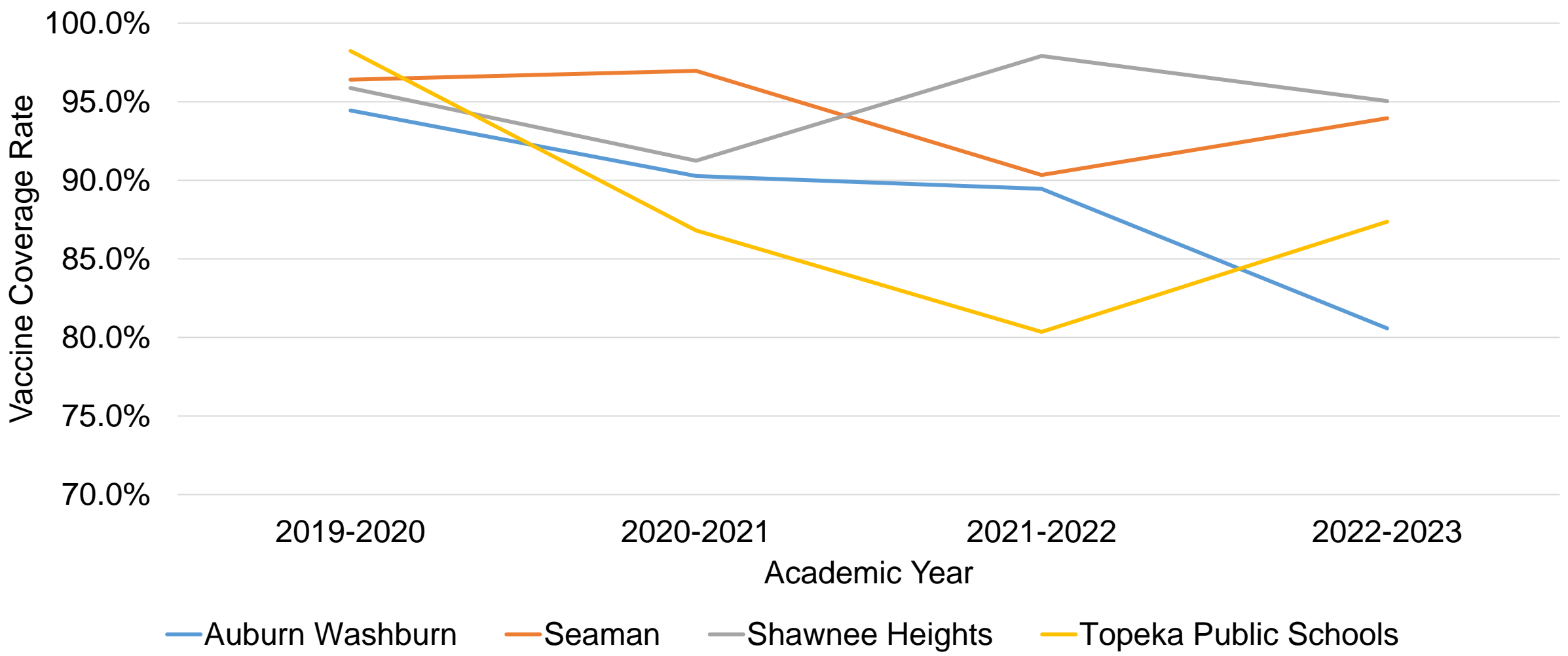
- 501 Topeka Public
- 450 Shawnee Heights
- 437 Auburn Washburn
- 345 Seaman

MMR Vaccine Coverage by School District for 2022-2023 Academic Year



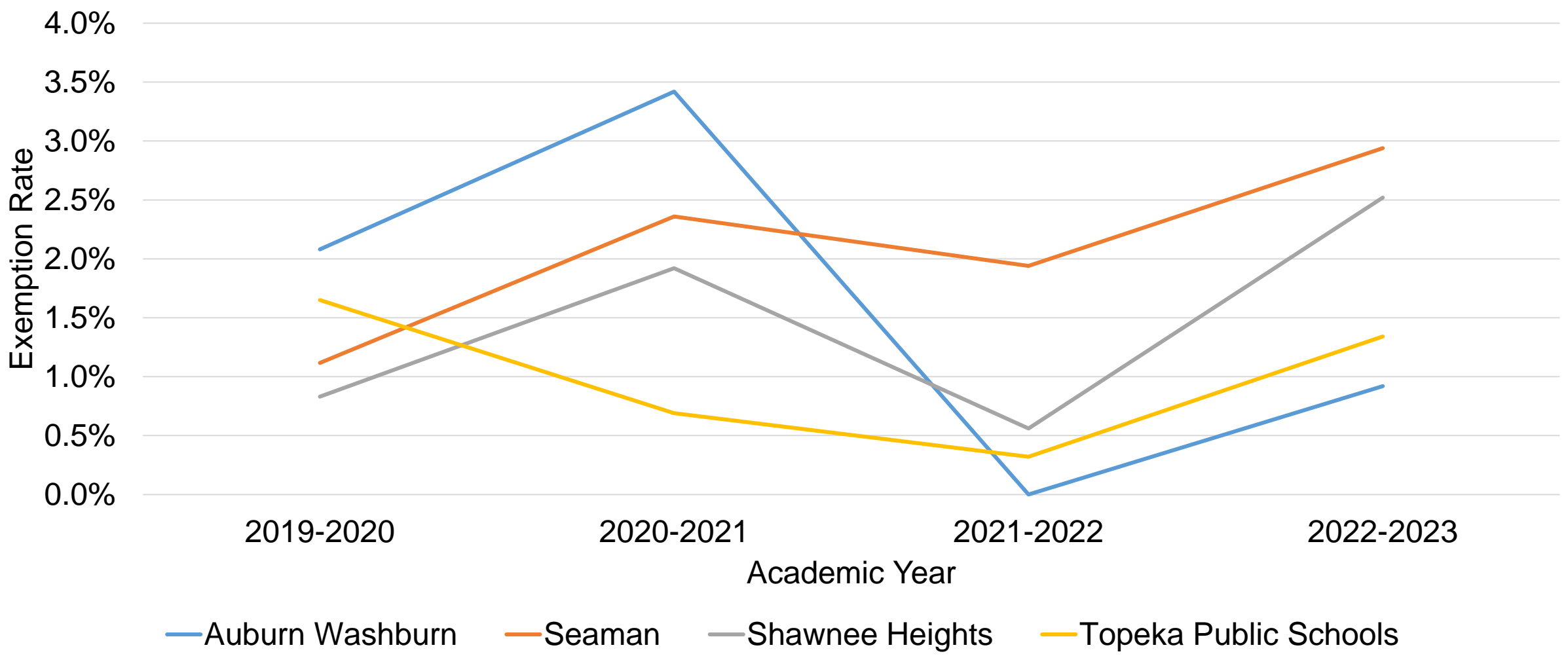
# Kansas Vaccine Requirements - Local Coverage: Topeka Area

MMR Vaccine Coverage among Topeka Area Kindergartens



# Kansas Vaccine Requirements - Local Coverage: Topeka Area

Exemption Rate among Topeka Area Kindergartens

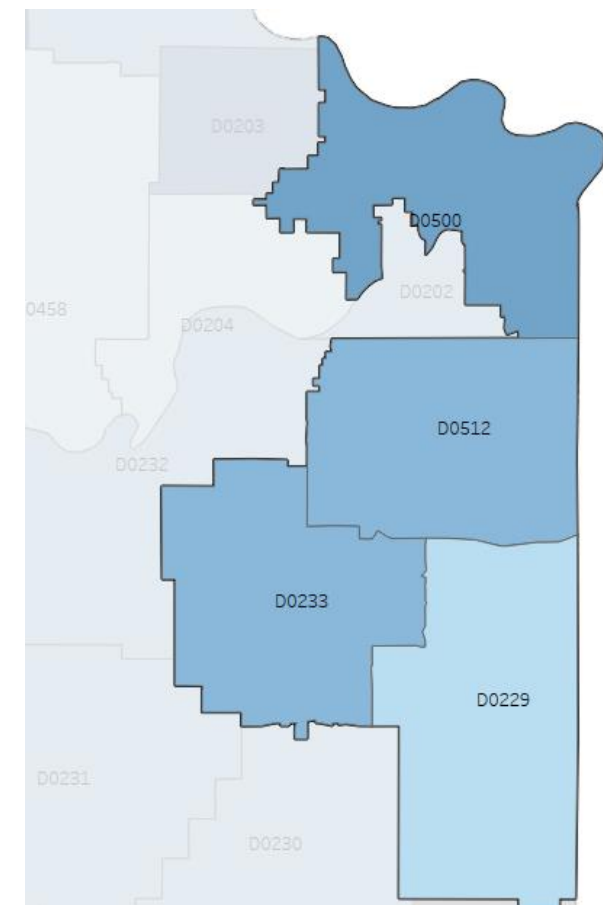




# Kansas Vaccine Requirements - Local Coverage: Kansas City Area

## District Comparison

- 229 Blue Valley
- 233 Olathe
- 500 Kansas City
- 512 Shawnee Mission

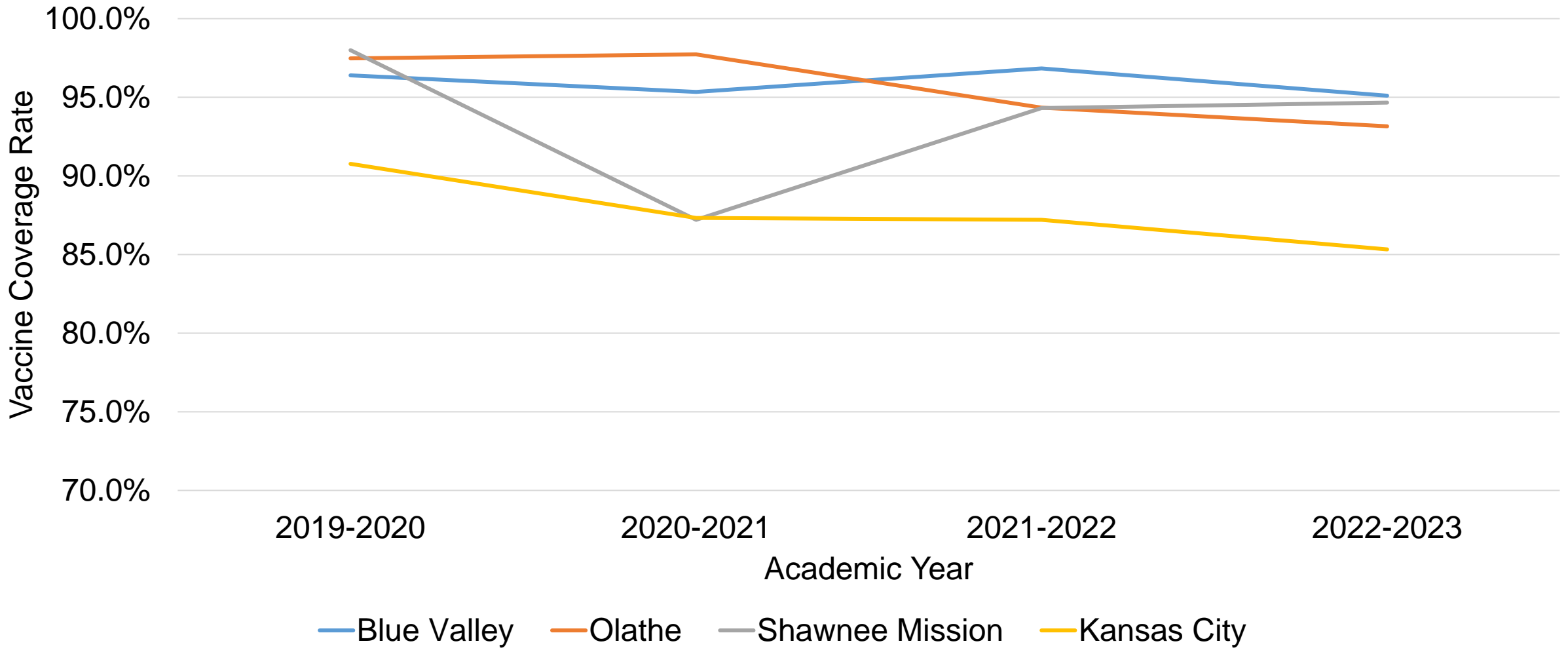


Coverage



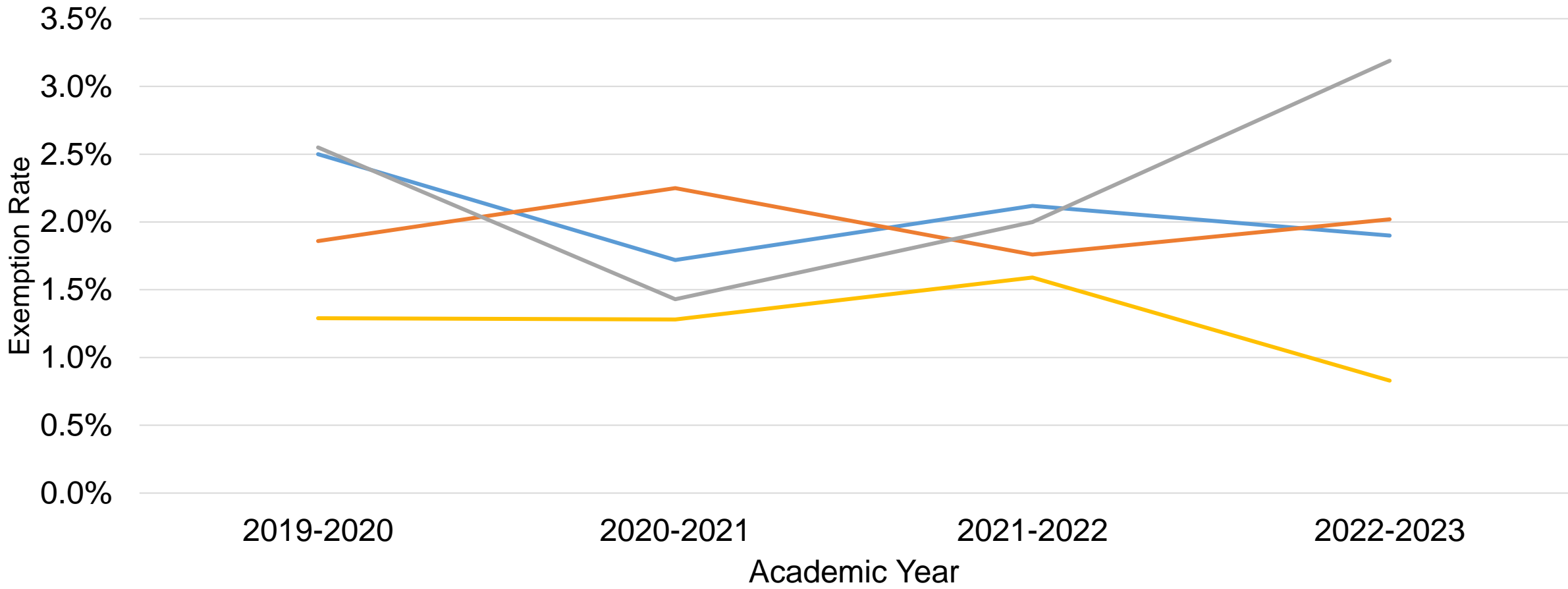
# Kansas Vaccine Requirements - Local Coverage: Kansas City Area

MMR Vaccine Coverage among Kansas City Area Kindergartens



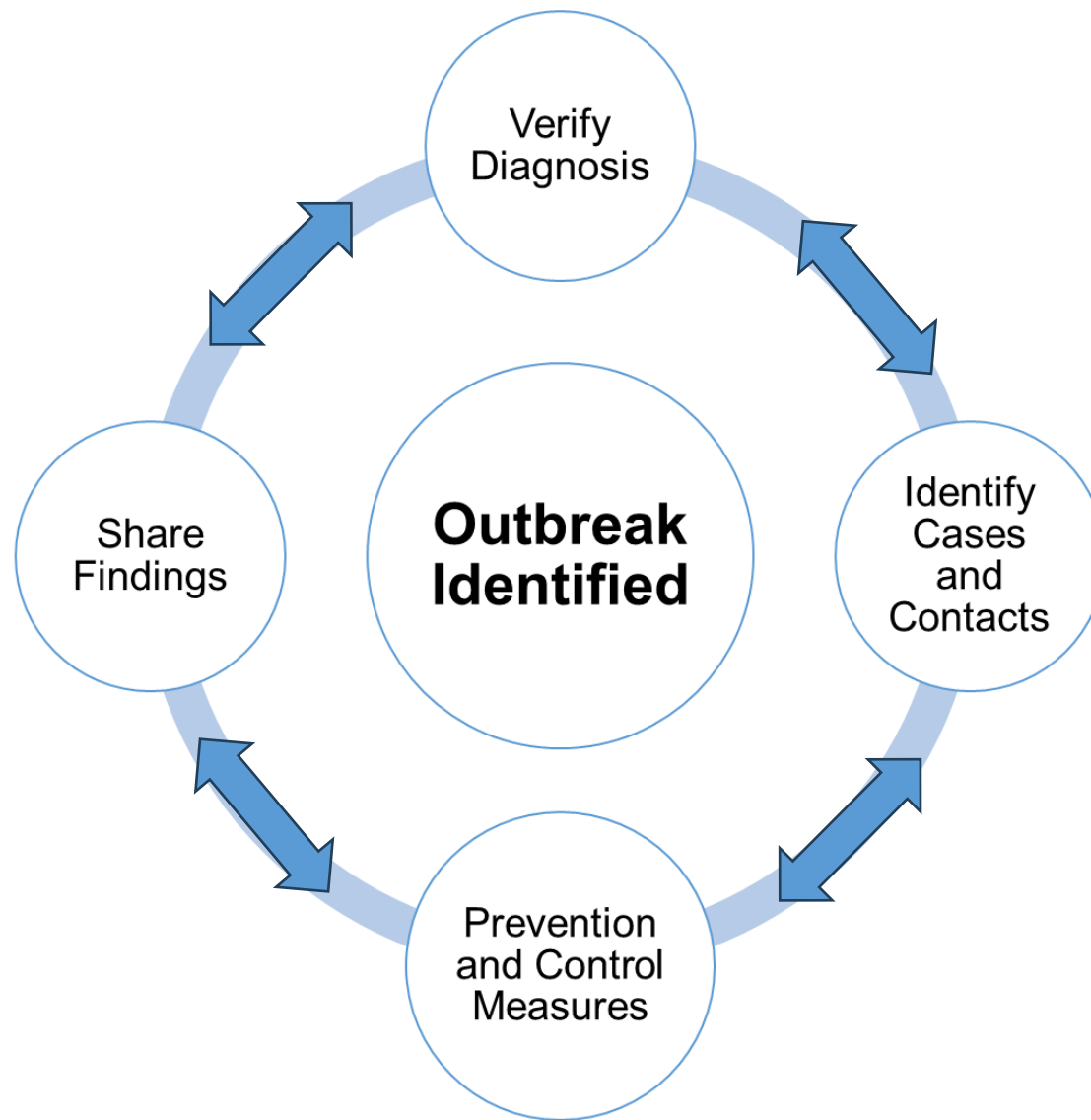
# Kansas Vaccine Requirements - Local Coverage: Kansas City Area

Exemption Rate Among Kansas City Area Kindergartens



— Blue Valley — Olathe — Shawnee Mission — Kansas City

# KDHE's Role in Vaccine Preventable Disease (VPD) Outbreak Response



## Outbreak is Identified

**REPORTABLE DISEASES IN KANSAS**  
(K.S.A. 65-118, 65-128, 65-6001 - 65-6007, K.A.R. 28-1-2, 28-1-4, and 28-1-18. Changes effective as of 5/11/2018)

For **4-hour reportable diseases** report to the KDHE Epidemiology Hotline: 877-427-7317. For **all other reportable diseases** fax a Kansas Reportable Disease Form and any lab results to your local health department or to KDHE: 877-427-7318 within 24 hours or by the next business day.

<p>Acute flaccid myelitis</p> <p><b>Anthrax</b> ☼</p> <p>Anaplasmosis</p> <p>Arboviral disease, neuroinvasive and nonneuroinvasive (including chikungunya virus, dengue virus, La Crosse, West Nile virus, and Zika virus)</p> <p>Babesiosis</p> <p>Blood lead levels (any results)</p> <p><b>Botulism</b> ☼</p> <p>Brucellosis</p> <p>Campylobacteriosis</p> <p><i>Candida auris</i> ☼</p> <p>Carbapenem-resistant bacterial infection or colonization ☼</p> <p>Carbon monoxide poisoning</p> <p>Chancroid</p> <p>Chickenpox (varicella)</p> <p><i>Chlamydia trachomatis</i> infection</p> <p><b>Cholera</b> ☼</p> <p>Coccidioidomycosis</p> <p>Cryptosporidiosis</p> <p>Cyclosporiasis</p> <p><b>Diphtheria</b> ☼</p> <p>Ehrlichiosis</p> <p>Giardiasis</p> <p>Gonorrhea (include antibiotic susceptibility results, if performed)</p> <p><i>Haemophilus influenzae</i>, invasive disease ☼</p> <p>Hansen's disease (leprosy)</p> <p>Hantavirus</p> <p>Hemolytic uremic syndrome, post-diarrheal</p> <p>Hepatitis, viral (A, B, C, D, and E, acute and chronic)</p> <p>Hepatitis B during pregnancy</p> <p>Hepatitis B in children &lt;5 years of age (report all positive, negative, and inconclusive lab results)</p> <p>Histoplasmosis</p> <p>Human Immunodeficiency Virus (HIV) (report the CD4+ T-lymphocyte cell counts, report viral load of any value, and report each pregnancy of women diagnosed with HIV)</p> <p>Influenza deaths in children &lt;18 years of age</p> <p><b>Influenza, novel A virus infection</b> ☼</p>	<p>Legionellosis</p> <p>Leptospirosis</p> <p>Listeriosis ☼</p> <p>Lyme disease</p> <p>Malaria</p> <p><b>Measles (rubella)</b> ☼</p> <p><b>Meningococcal disease</b> ☼ ☼</p> <p><b>Mumps</b> ☼</p> <p>Pertussis (whooping cough)</p> <p><b>Plague (<i>Yersinia pestis</i>)</b> ☼</p> <p><b>Poliovirus</b> ☼</p> <p>Pertussis (whooping cough)</p> <p>Psittacosis</p> <p>Q Fever (<i>Coxiella burnetii</i>, acute and chronic)</p> <p><b>Rabies, human</b> ☼</p> <p>Rabies, animal</p> <p><b>Rubella</b> ☼</p> <p>Salmonellosis, including typhoid fever ☼</p> <p><b>Severe Acute Respiratory Syndrome-associated coronavirus (SARS-CoV)</b> ☼ ☼</p> <p>Shiga toxin-producing <i>Escherichia coli</i> (STEC) ☼</p> <p>Shigellosis ☼</p> <p><b>Smallpox</b> ☼</p> <p>Spotted fever rickettsiosis</p> <p><i>Streptococcus pneumoniae</i>, invasive disease ☼</p> <p>Syphilis, all stages, including congenital syphilis</p> <p><b>Tetanus</b> ☼</p> <p>Toxic shock syndrome, streptococcal and other</p> <p>Transmissible spongiform encephalopathy (TSE) or prion disease</p> <p>Trichinellosis or trichinosis</p> <p><b>Tuberculosis, active disease</b> ☼ ☼</p> <p>Tuberculosis, latent infection</p> <p>Tularemia, including laboratory exposures</p> <p><b>Vaccinia, post vaccination infection or secondary transmission</b></p> <p>Vancomycin-intermediate and resistant <i>Staphylococcus aureus</i> (VISA and VRSA)</p> <p>Vibriosis (all <i>cholerae</i> and non-<i>cholerae</i> <i>Vibrio</i> species) ☼</p> <p><b>Viral hemorrhagic fevers</b> ☼</p> <p>Yellow fever</p>
--	--

☼ Outbreaks, unusual occurrence of any disease, exotic or newly recognized diseases, suspect acts of terrorism, and unexplained deaths due to an unidentified infectious agent should be reported within 4 hours by telephone to the Epidemiology Hotline: 877-427-7317

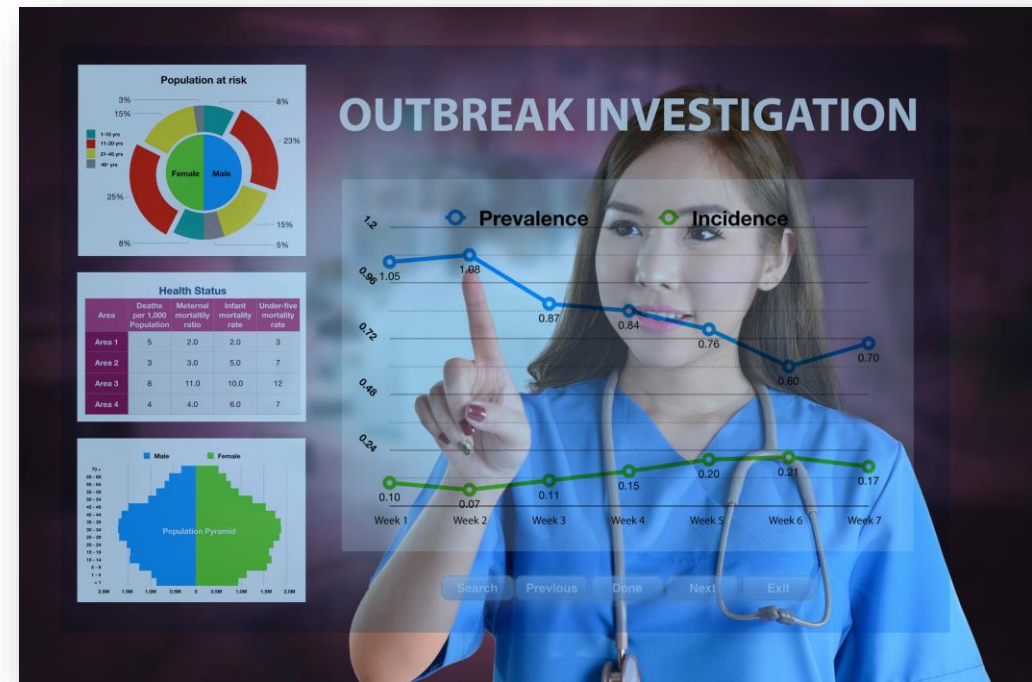
☼ - Indicates that a telephone report is required by law within four hours of suspect or confirmed cases to KDHE toll-free at 877-427-7317

☼ - Indicates that bacterial isolate, original clinical specimen, or nucleic acid must be sent to: Division of Health and Environmental Laboratories, 6810 SW Dwight St, Topeka, KS 66620-0001 Phone: (785) 296-1620

- Kansas Administrative Regulation (K.A.R.) 28-1-2 designates reportable conditions in Kansas
  - Outbreaks of any kind are reportable to KDHE by telephone within four hours of suspicion
- All case investigations reviewed by KDHE epidemiology staff
  - Identify commonalities
  - Monitor for unexpected increases in cases
- KDHE confirms outbreak definition is met and advises next steps

## Example – Shawnee County Hepatitis A Outbreak

- In May 2023, KDHE epidemiologists noticed several hepatitis A cases reported in Shawnee County within short window
- Reviewed case data and identified commonalities
  - Geographic location
  - Persons reporting unstable housing
  - Persons reporting drug use
  - Jail association



## Verify Diagnosis



- Epidemiologists provide guidance on preferred testing by etiology
  - Test type
  - Collection
  - Shipping and handling
- Kansas Health and Environmental Laboratories (KHEL) has capacity to test for several VPDs
  - Testing is free of charge
  - Can provide collection and shipping supplies
  - Fast turnaround time
- KDHE can also facilitate testing at CDC

## Example – Shawnee County Hepatitis A Outbreak

- Majority of cases tested in local emergency department
- Results reported electronically to KDHE
- Testing performed on recently symptomatic individuals at outbreak settings and Mobile Access Partnership (MAP) events
- Sequencing performed at CDC to link cases





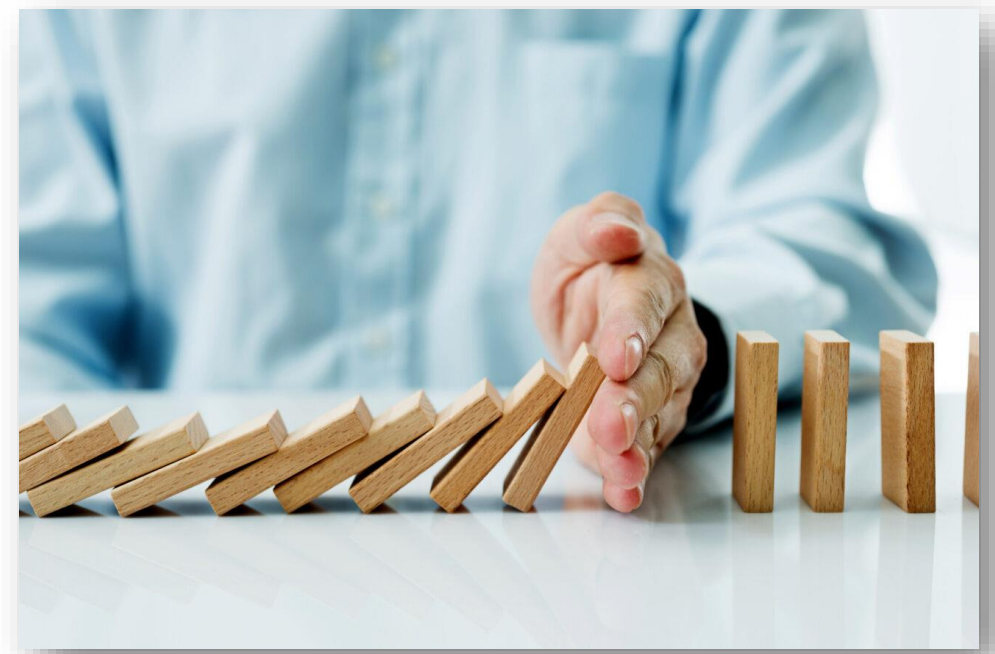
## Identify Cases and Contacts



- Support case and contact investigations
  - Interviewing or data collection tools
  - Text monitoring
- Surge capacity for identifying cases and contacts
- **Example: Hepatitis A Outbreak**
  - Provided surge capacity for case interviews and follow up with contacts
  - Interview technique trainings
  - Outreach to medical providers for case finding

## Prevention and Control Measures

- Control measures
  - Isolation
  - Treatment
  - Education
- Prevention measures
  - Quarantine
  - Prophylaxis of contacts with vaccine or immune globulin
  - Chemoprophylaxis or administration of antimicrobial agents
  - Education
  - Community vaccination



## Example – Shawnee County Hepatitis A Outbreak



**Protect Yourself and Your Community.**  
**There is an Outbreak of Hepatitis A.**

**Hepatitis A can be prevented with a safe and effective vaccine.**  
Hepatitis A is a liver infection caused by the hepatitis A virus. The virus is very contagious and spreading from person to person and causing an outbreak.

**Shawnee County Health Department**  
2115 SW 10th Ave, Topeka, KS 66604

**Vaccination Clinic Hours**  
Mon, Thurs and Fri: 8 - 11 a.m. and 1- 4 p.m.  
Tues: 10 a.m. - 1 p.m. and 3 - 6 p.m.  
Weds: 8 - 11 a.m. and 2 - 4 p.m.

Call **785-251-5700** to schedule an appointment.  
Walk-ins accepted.

**Who should get vaccinated?**

- People who use injection or non-injection drugs.
- People experiencing unstable housing and/or homelessness.
- People who are currently or have recently been incarcerated.
- People at increased risk of severe disease from infection (persons with severely compromised immune systems, chronic liver disease, or HIV infection and older adults).
- People who provide care for individuals who are experiencing homelessness, who use injection or non-injection drugs, or the elderly.

**See a doctor if you have any symptoms of hepatitis A.**

 Yellow skin or eyes	 Feeling tired	 Loss of appetite	 Stomach pain	 Joint pain
 Dark urine or light-colored stools	 Fever	 Throwing up	 Upset stomach	 Diarrhea

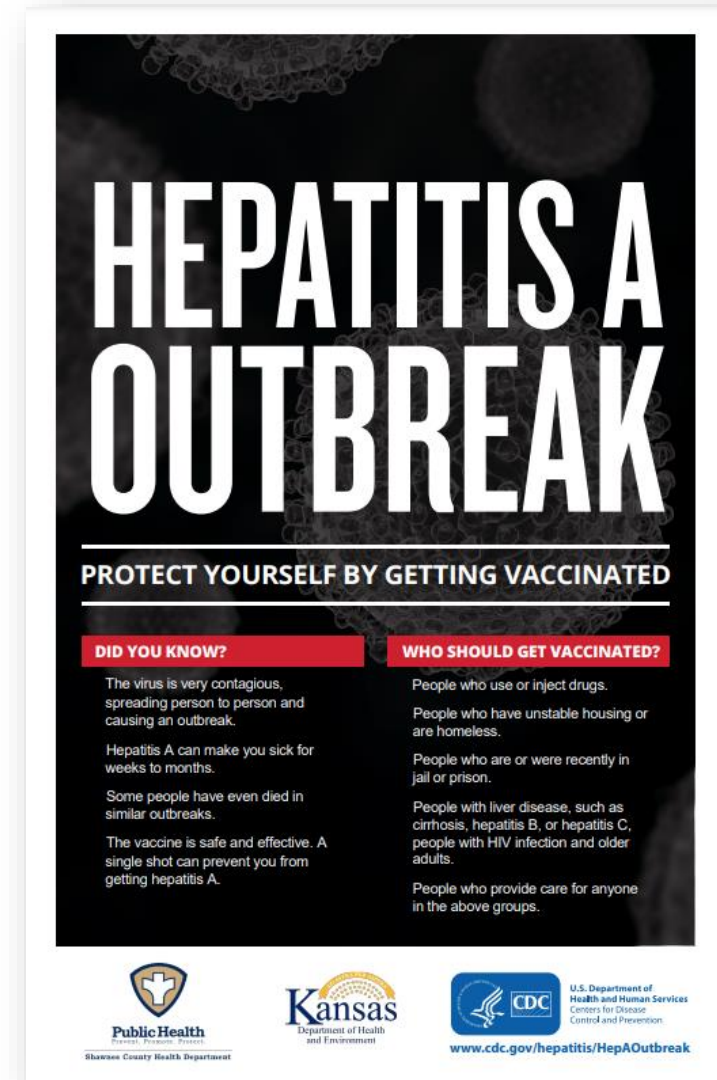
Scan the QR code to visit the CDC website:  
[cdc.gov/hepatitis/HepAOutbreak](https://cdc.gov/hepatitis/HepAOutbreak)



- Control measures
  - Educating upon interview
  - Identifying food handlers
- Prevention measures
  - Prophylaxis of contacts with vaccine
  - Education
    - Website resource hub for public, patients, providers
    - Palm cards
  - Community vaccination
    - MAP events
    - Cluster settings
    - Routine clinics
    - Emergency department
    - Other places where care is sought

## Share Findings


- KDHE epidemiologists and Communications will work with affected local health departments to disseminate information related to the outbreak:
  - Kansas Health Alert Network (KS-HAN)
  - Press Releases
  - Webinars
- Outbreak related websites or dashboards





**HEPATITIS A  
OUTBREAK**

**PROTECT YOURSELF BY GETTING VACCINATED**

<b>DID YOU KNOW?</b>	<b>WHO SHOULD GET VACCINATED?</b>
<p>The virus is very contagious, spreading person to person and causing an outbreak.</p> <p>Hepatitis A can make you sick for weeks to months.</p> <p>Some people have even died in similar outbreaks.</p> <p>The vaccine is safe and effective. A single shot can prevent you from getting hepatitis A.</p>	<p>People who use or inject drugs.</p> <p>People who have unstable housing or are homeless.</p> <p>People who are or were recently in jail or prison.</p> <p>People with liver disease, such as cirrhosis, hepatitis B, or hepatitis C, people with HIV infection and older adults.</p> <p>People who provide care for anyone in the above groups.</p>

 **Public Health**  
Shawnee County Health Department

 **Kansas**  
Department of Health  
and Environment

 **CDC**  
U.S. Department of  
Health and Human Services  
Centers for Disease  
Control and Prevention

[www.cdc.gov/hepatitis/HepAOutbreak](http://www.cdc.gov/hepatitis/HepAOutbreak)

# KDHE's Role in VPD Outbreak Response

## Example – Shawnee County Hepatitis A Outbreak



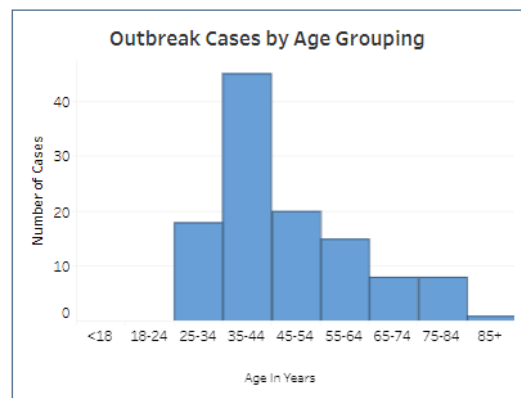
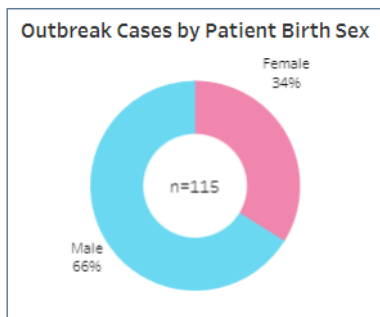
### KDHE Infectious Disease Outbreak Dashboard

#### Shawnee County Hepatitis A Outbreak

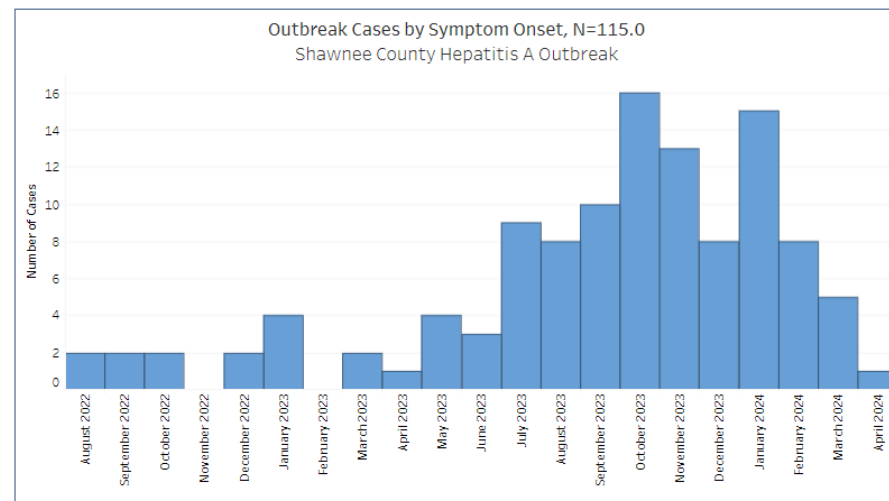
The Kansas Department of Health and Environment (KDHE) and the Shawnee County Health Department (SCHD) have been working together in response to a person-to-person hepatitis A outbreak. This outbreak is not spreading because of contaminated foods, drinks, or infected food handlers. This outbreak will be considered over after 100 days (two incubation periods) from the last person's onset of symptoms. Refer to the KDHE Hepatitis A outbreak page for resources and additional information.

As of Apr. 10, 2024, a total of 115 cases have been reported and associated with the Shawnee County Hepatitis A Outbreak which began in August 2022. Case data is provisional and may change from week to week. Dashboard will be updated every Wednesday by noon.

Total Outbreak Cases	Total Hospitalized	Total Deaths	Cases Reported in 2024
115	37	0	29



When a case is reported to public health, disease investigators will attempt to interview the case to identify any potential risk factors. Risk factors are self-reported and represent known factors that increase a person's likelihood of exposure to the virus. A case may report more than one risk factor.



## Measles Internationally

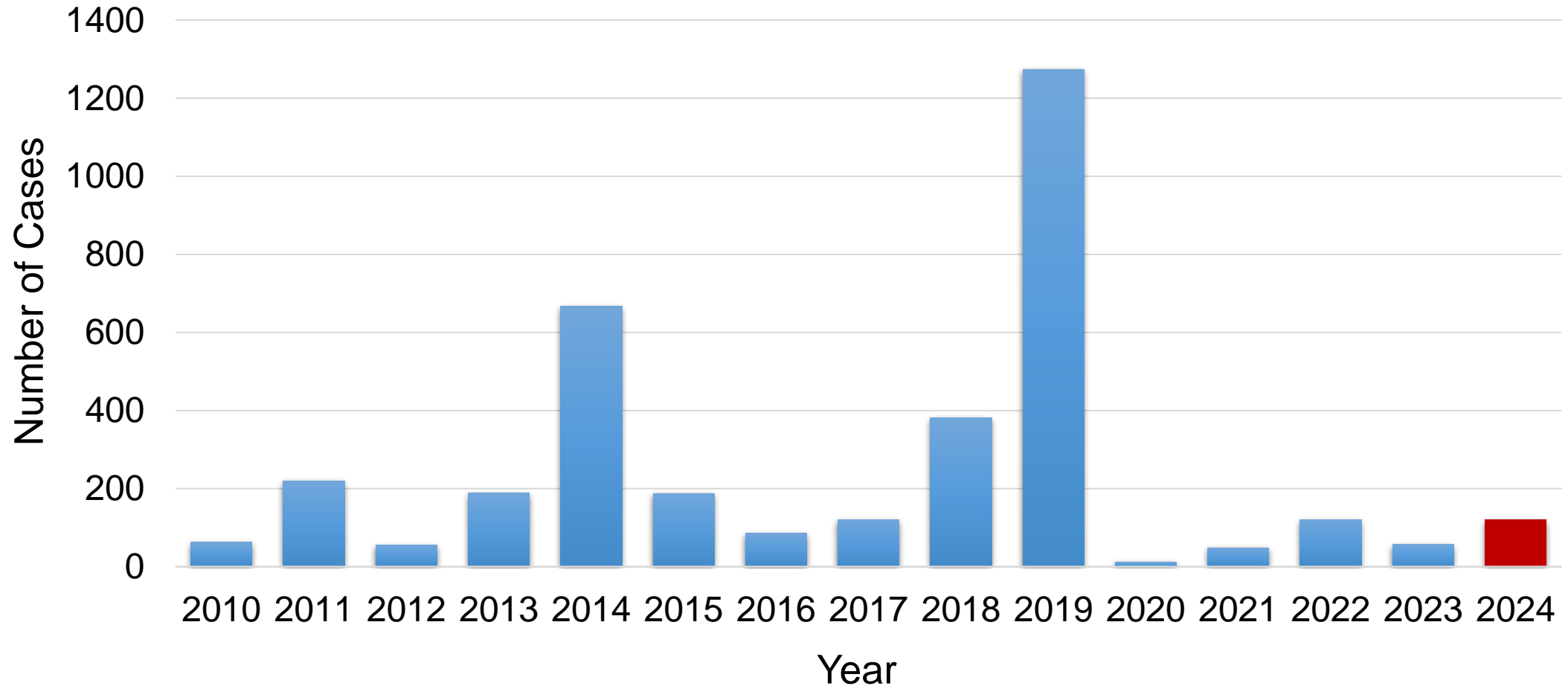
<b>Global Measles Outbreaks (Aug. 2023 – Jan. 2024)</b>		
<b>Rank</b>	<b>Country</b>	<b>Number of Cases</b>
1	Kazakhstan	21,740
2	Azerbaijan	13,720
3	Yemen	13,676
4	India	13,220
5	Iraq	11,595
6	Ethiopia	9,042
7	Kyrgyzstan	7,601
8	Russian Federation	7,594
9	Pakistan	5,812
10	Indonesia	5,648

- Globally, cases in 2023 were up 79% from previous year.
- Concerns this will continue to grow given disruption in vaccination campaigns due to COVID-19.

## Measles Importation

- Measles has been eliminated in the U.S. since 2000
  - No continuous spread in one region or country for at least 12 months.
- Measles cases and outbreaks are a result of importation
  - When imported into a highly vaccinated population, outbreaks don't happen or are small.
- Importations into communities with low vaccination rates may result in large outbreaks; for example:
  - Rockland County, NY in 2018 and 2019
  - Minnesota in 2017
  - Kansas in 2018

## Measles in the U.S. (2010-2024)



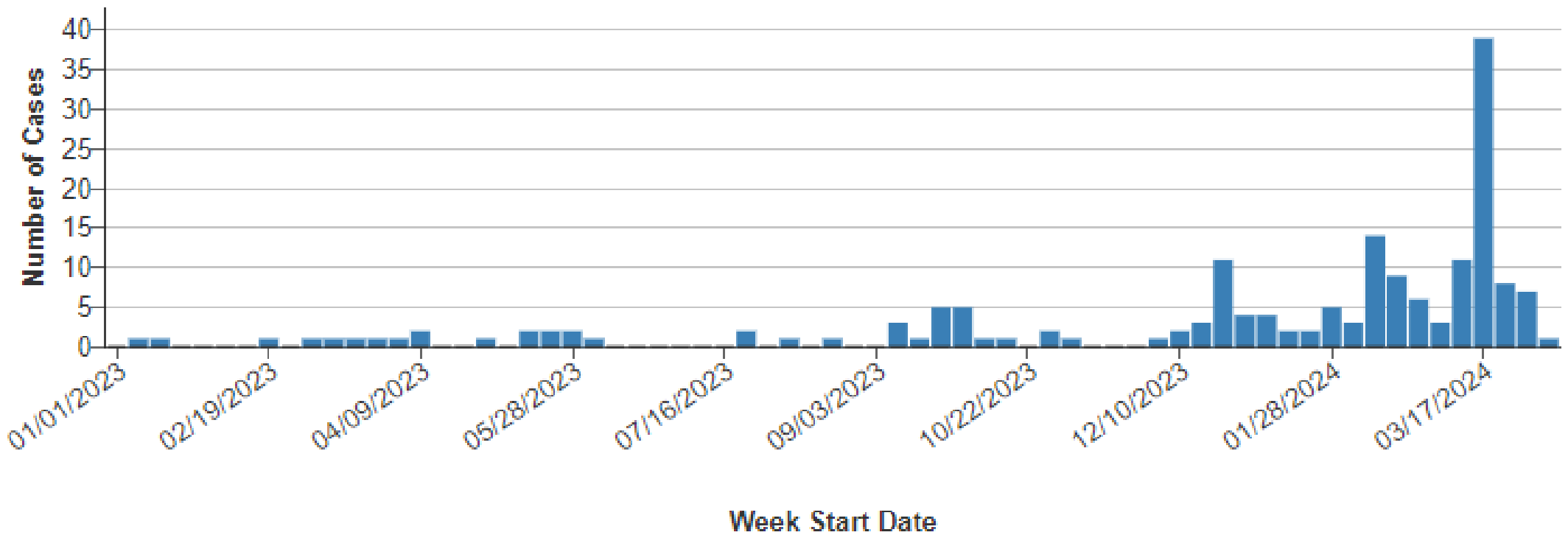
Data Source: CDC. Accessible at [cdc.gov/measles/cases-outbreaks.html](https://cdc.gov/measles/cases-outbreaks.html)



## Measles in the U.S.

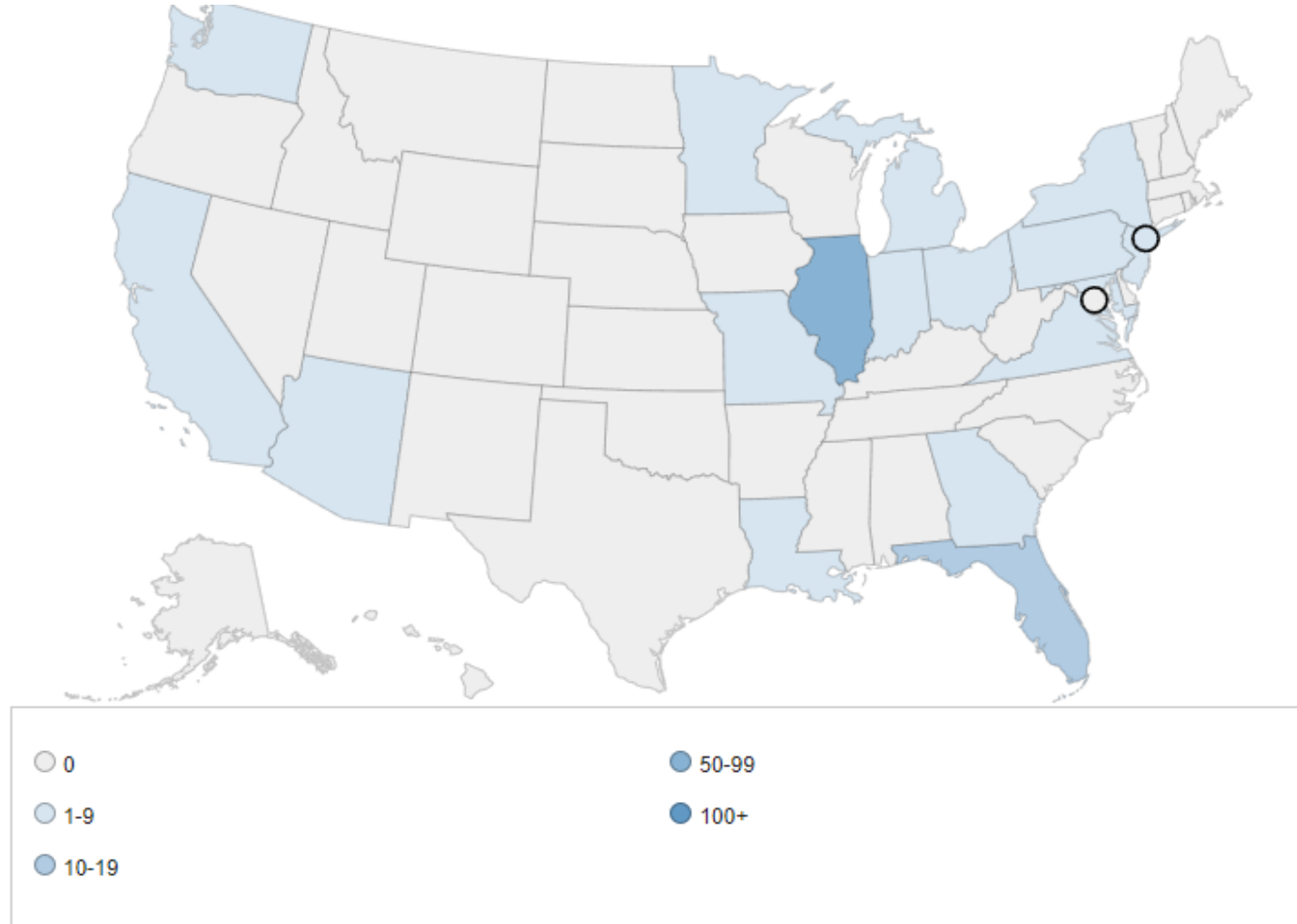
### Number of measles cases reported by week

2023-2024\* (as of April 11, 2024)



Data Source: CDC. Accessible at [cdc.gov/measles/cases-outbreaks.html](https://cdc.gov/measles/cases-outbreaks.html)

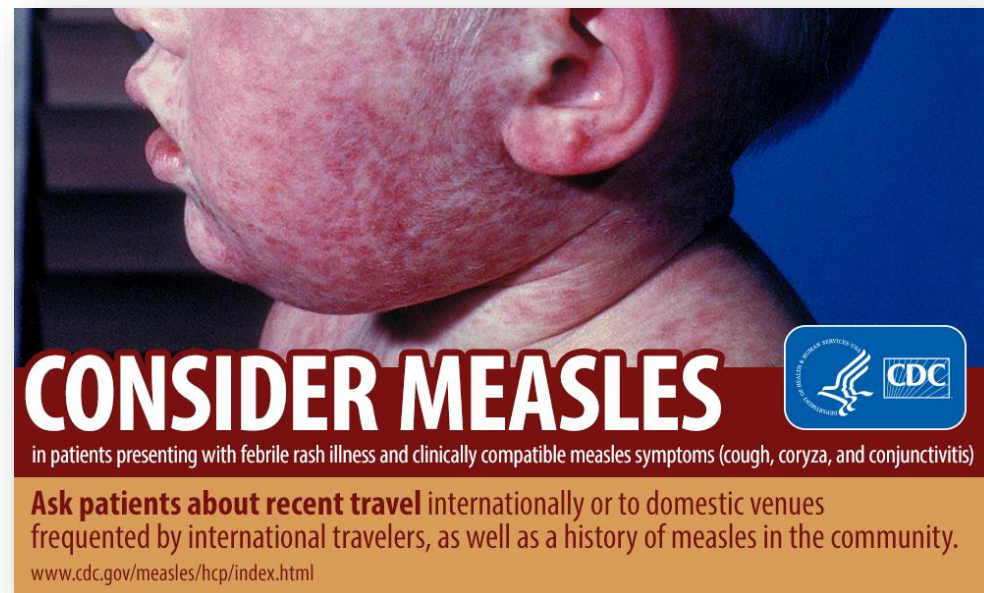
## Measles in the U.S.



Data Source: CDC. Accessible at [cdc.gov/measles/cases-outbreaks.html](https://cdc.gov/measles/cases-outbreaks.html)

## Protecting your Community from Measles

- Raise awareness among providers and community members
  - Current activity
  - Symptoms
  - Where to seek care
  - Testing
- Consider high risk settings
  - International travel
  - Domestic travel
  - Daycares



For more information: [cdc.gov/measles/hcp/index.html](http://cdc.gov/measles/hcp/index.html)

## Protecting your Community from Measles

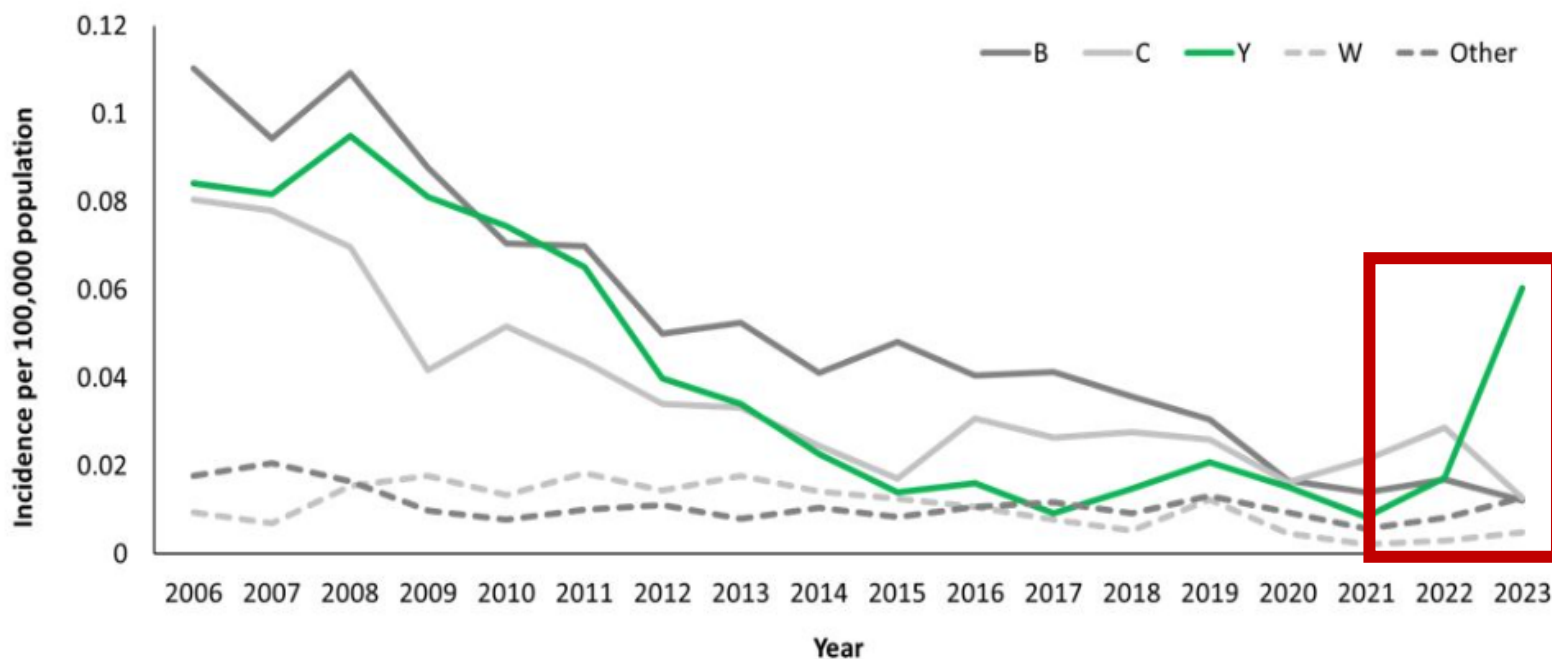
- A person is protected if they have the following:
  - One or two documented dose/s of measles virus-containing vaccine depending on age and risk
  - Laboratory evidence of immunity (measles immunoglobulin G titer)
  - Positive test from previous infection
  - Birth before 1957
- Before traveling internationally, consider other measures:
  - Infants 6-11 months receive one dose of MMR vaccine
  - Children 12 months or older receive 2 doses of MMR vaccine
  - Teenagers and adults receive 2 doses of MMR vaccine

## Invasive Serogroup Y Meningococcal Disease

- CDC Health Alert Network issued March 28, 2024:
  - In 2023, 422 cases reported
    - Highest number reported since 2014
  - As of March 25, 2024, 143 cases reported
    - 62 cases higher than reported at this time in 2023
- *Neisseria meningitidis* sequence type (ST) 1466 responsible for 68% of sequenced serogroup Y cases in 2023

## Invasive Serogroup Y Meningococcal Disease

Figure: Trends in meningococcal disease incidence per 100,000 population, by serogroup—United States, 2006–2023. Incidence of *Neisseria meningitidis* serogroup Y is shown in green. Source: National Notifiable Diseases Surveillance System, with additional serogroup data from Active Bacterial Core surveillance (ABCs) and state health departments. 2022 and 2023 data are preliminary.



Data Source: CDC. Accessible at [emergency.cdc.gov/han/2024/han00505.asp](https://emergency.cdc.gov/han/2024/han00505.asp)

## Serogroup Y ST-1466 Meningococcal Disease

- ST-1466 is disproportionately affecting the following populations:
  - Adults, aged 30–60 years (65% of cases)
  - Black or African American people (63% of cases)
  - People with HIV (15% of cases)
- Majority of cases had clinical presentation other than meningitis:
  - Bacteremia or meningococcemia (64%)
  - Septic arthritis (4%)
- Current observed case fatality rate of 18%

## Serogroup Y ST-1466 Meningococcal Disease

- Recommendations for providers:
  - Maintain heightened suspicion for invasive meningococcal disease, regardless of age or demographic group
  - Be aware meningococcal infection may not present with symptoms typical of meningitis
  - Ensure persons recommended to receive meningococcal vaccine are up to date
    - Persons with HIV should receive MenACWY as follows:
      - 2-dose primary series
      - Booster dose every 3-5 years (age dependent)



## Vaccines and VPD

- Increasing religious exemptions also increases the percentage of the population susceptible to VPD.
- Decreasing immunization coverage increases the risk of VPD outbreaks.
- VPD outbreaks require extensive work and support for local investigators.
- Immunization requirement enforcement starts at local level with policies promoting immunizations.



## **Andrea May, MPH**

Advanced Epidemiologist

785-296-0687

Andrea.May@ks.gov

## **Allison Zaldivar, MPH**

Senior Epidemiologist

785-368-8208

Allison.Zaldivar@ks.gov



# **Ad Astra ECHO Series: Immunizations in Kansas**

Cynthia Snyder, M.A. and Hina Shah, MPH  
*Kansas Health Institute*



**KANSAS HEALTH INSTITUTE**

*Informing Policy. Improving Health.*



KANSAS HEALTH INSTITUTE

*Informing Policy. Improving Health.*



KANSAS HEALTH INSTITUTE

*Informing Policy. Improving Health.*

# Who We Are

---



- Nonprofit, nonpartisan educational organization based in Topeka.
- Established in 1995 with a multi-year grant by the Kansas Health Foundation.
- Committed to convening meaningful conversations around tough topics related to health.



# Today's Agenda

- What is a public health ECHO?
- Immunizations in Kansas ECHO series



KANSAS HEALTH INSTITUTE

*Informing Policy. Improving Health.*



KANSAS HEALTH INSTITUTE  
*Informing Policy. Improving Health.*



# What is an ECHO?

Project ECHO® is an innovative “hub and spoke” model designed to create communities of learners by connecting subject matter experts with the target population. It uses multi-point video-conferencing technology, case-based learning, evidence-based and promising practices, and outcomes monitoring. KHI is an ECHO Hub, Ad Astra ECHO.



# ECHO: Moving Knowledge, Not People

---

## **The ECHO Model is committed to:**

Addressing the needs of the most vulnerable populations by equipping communities with the right knowledge at the right place, at the right time.

## **The ECHO Model is a movement to:**

- Demonopolize knowledge
- Amplify the capacity to provide best practice care for underserved people all over the world.





# Project ECHO's ABCD Model

**A**  
**Amplification** - Use *Technology* to leverage scarce resources



**B**

Share **Best Practices** to reduce disparity



**C**  
**Case Based Learning** to master complexity



**D**

Web-based **Database** to *Monitor Outcomes*





# Ad Astra ECHO<sup>®</sup> Series

Immunizations in Kansas



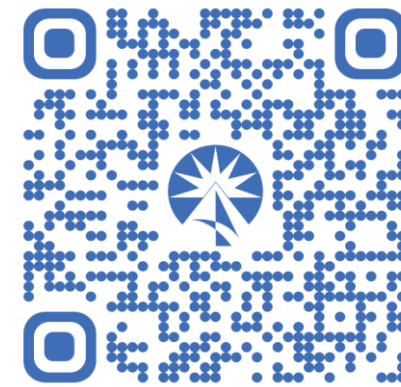
# Acknowledgments

---



# Past Sessions Available Online at khi.org

- Back-to-School Immunizations – Procedures and Policy
- Immunizations for Healthy Aging
- Immunizations for Maternal Health
- Access to Immunizations for Uninsured Adults



# Next Session

---

## Immunizations for Adolescents and Young Adults

May 3, 2024, 10-11:30 a.m.

Registration link in the chat





# KANSAS HEALTH INSTITUTE

---

*Informing Policy. Improving Health.*



[bit.ly/AdAstraECHO](https://bit.ly/AdAstraECHO)



# VACCINE POLICY UPDATE

*Heather Braum, MLS,  
IKC Policy Chair*



STATE OF KANSAS  
**PROCLAMATION BY THE GOVERNOR**

TO THE PEOPLE OF KANSAS, GREETINGS:  
WHEREAS, protecting individuals from vaccine-preventable diseases is critical to ensuring the health and safety of all Kansas; and  
WHEREAS, the Centers for Disease Control and Prevention ranks vaccination among the most significant public health achievements of the 20th century; and  
WHEREAS, a 2020 study found that due to the pandemic, teens and adults may have missed more than 26 million doses of recommended vaccines in 2020; and  
WHEREAS, the 2022 convergence of seasonal influenza, COVID and RSV affected health systems still dealing with the effects of the pandemic, posing a major threat to immunocompromised people, flooding hospitals, and forcing the cancellation of some elective procedures; and  
WHEREAS, young children and older adults are particularly vulnerable to vaccine-preventable diseases until they can be fully immunized; and







# Community Immunity

Amanda Applegate, PharmD, BCACP  
*Chair, Immunize Kansas Coalition*  
*Director of Practice Development, KPhA*





# Immunization Neighborhood

## **Collaboration, Coordination, & Communication**

among immunization stakeholders dedicated to meeting the immunization needs of the patient and protecting the community from vaccine-preventable diseases

# Immunization Neighborhood

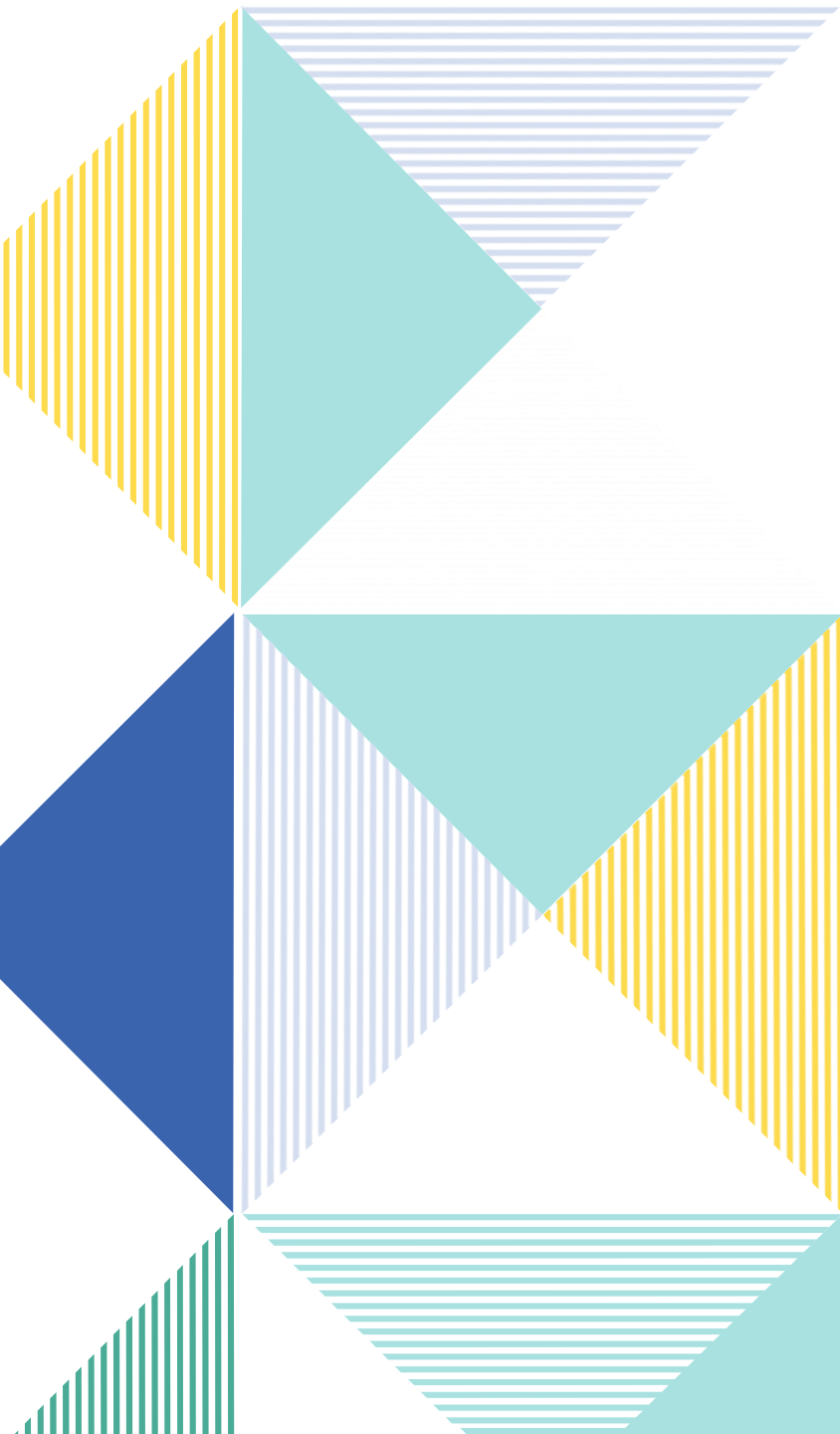




# Community Immunity

## Collaboration ideas

- Library + clinician book reading
- Back to school: School district + health department
- County fair: Pharmacy + health department + insurance company
- Workplace: Community health worker + pharmacy
- Flu Shot Sunday: Church + pharmacy/clinic
- Low income housing + health department



# Community Immunity

How have you worked with another organization or another profession in your community to improve immunization rates?

- What went well?
- What were challenges?
- How did you communicate with each other?
- How did you reach out to the community?



# **Immunization Partner Highlights: Vaccine Activities and Reach**

# FINAL ANNOUNCEMENTS Q&A

*Amanda Applegate, PharmD, BCACP  
IKC Chair*



# Reminder: Upcoming Events

## Entre Mujeres

- April 28<sup>th</sup>

## National Infant Immunization Week

- April 22-29<sup>th</sup>

## Kansas Immunization Conference

- May 20-23<sup>rd</sup>
- IKC Dinner
  - May 21<sup>st</sup>

## IKC Annual Coalition Meeting

- July 26<sup>th</sup>

## National Immunization Awareness Month/Back to School Vaccines

- August

## IKC Coalition Meeting

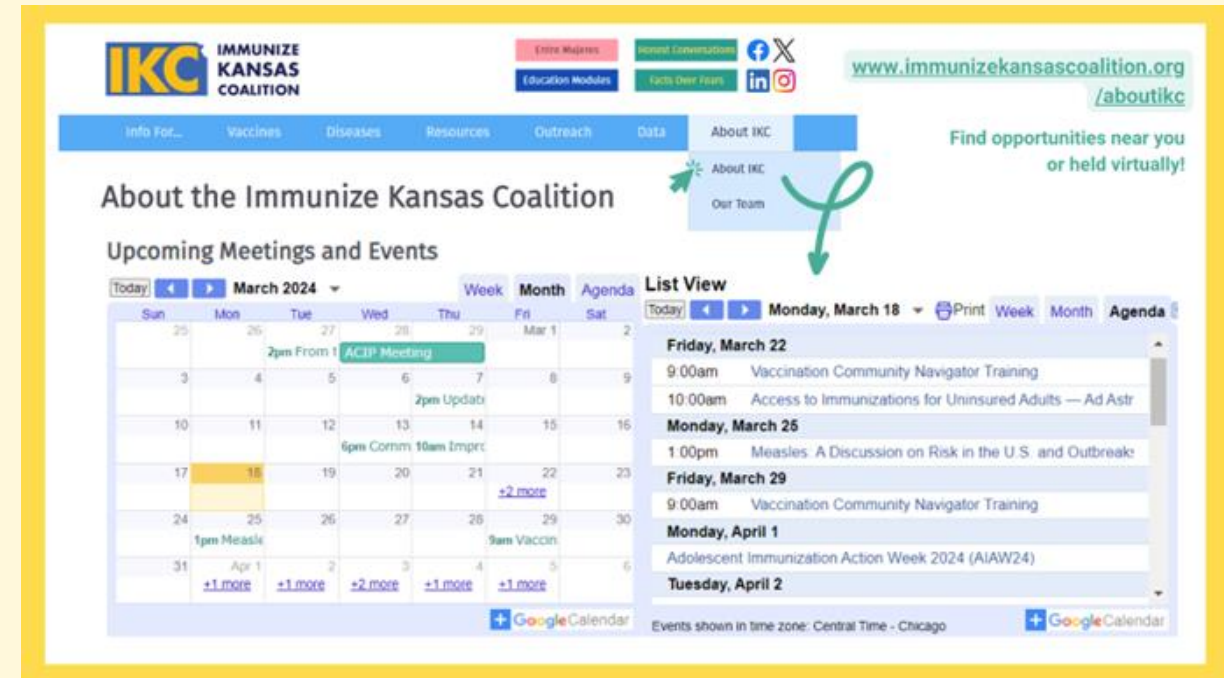
- November 22<sup>nd</sup>

## National Influenza Immunization Week

- Early December

## IKC Advocacy Day

- Late January or early February - Stay tuned!



The calendar is continuously updated with webinars and additional events.



# NATIONAL INFANT IMMUNIZATION WEEK (NIIIW)

APRIL 22-26<sup>TH</sup>



**It's National Infant  
Immunization Week**

**You have the power to protect.  
Your recommendation matters.**



National Infant  
Immunization Week



Join us on April 28<sup>th</sup>  
in Kansas City!

Register and  
learn more!



# Entre Mujeres: The Health of Women

Sunday, April 28, 2024  
12:00 - 4:00 p.m.

Memorial Hall  
600 N. 7th Street  
Kansas City, KS

## Featuring

- Motivational and Informative Speakers
- Food provided
- Mariachi Band Entertainment
- Local Vendors
- Raffle
- Women's Health and Cancer Prevention Education
- Free HPV vaccinations on site
- And MORE!

**\$10** Ticket  
includes  
lunch

**IKC** IMMUNIZE  
KANSAS  
COALITION

# QUESTIONS?

The screenshot shows the top portion of the Immunize Kansas Coalition website. On the left is the IKC logo. To its right is the text 'IMMUNIZE KANSAS COALITION'. Further right are four buttons: 'Toolkits', 'Education Modules', 'Honest Conversations', and 'Facts Over Fears'. To the right of these buttons are social media icons for Facebook, Twitter, LinkedIn, and Instagram. Below the buttons is a navigation menu with links for 'Home', 'Info For...', 'Vaccines', 'Diseases', 'Resources', 'Data', and 'About IKC'. A blue banner below the navigation menu contains the text: 'IKC is hiring a Community Health Specialist: [View the position and application info.](#)' Below the banner is a photograph of a diverse group of people (a man, a woman, and a child) smiling and laughing. At the bottom of the screenshot is a section titled 'OUR MISSION:' with the text: 'The mission of the Immunize Kansas Coalition is to protect all Kansans from vaccine-preventable diseases.'

## Contact your Regional Community Health Specialist

Lucy Watie – Grant County  
Patricia Torres – Seward County  
Marixendra Alvarez- Sedgwick County  
Leonor Ramos – Wyandotte and Johnson Counties

Executive Director  
Geovannie Gone  
[ggone@immunizekansascoalition.org](mailto:ggone@immunizekansascoalition.org)  
620-521-1832

[www.immunizekansascoalition.org](http://www.immunizekansascoalition.org)

# Thank you for attending

Before leaving, make sure you stop by the exhibit tables!

