

Influenza is not a nationally notifiable disease, nor is it a notifiable disease in Kansas; therefore, the burden of influenza is monitored through other surveillance methods.

Kansas Flu by the Numbers

2019-2020

2020-2021

Emergency Department Visits

Highest weekly percentage of visits due to influenza-like illness (ILI) reported by syndromic surveillance



10.5%

1.9%

Deaths

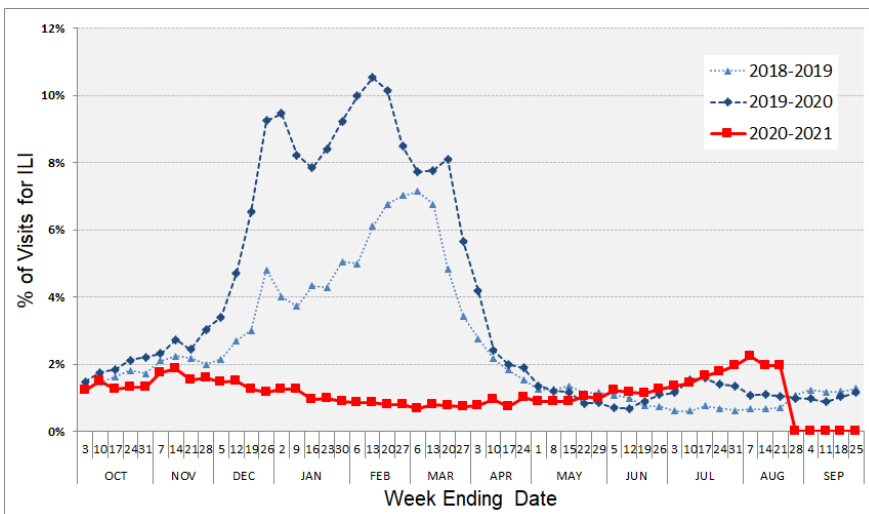
Four deaths were directly attributed to influenza and two deaths had influenza documented as a contributing factor during the 2020-2021 season.



141

6

Percentage of visits for ILI reported by ILINet Sites
Oct. 2018-Sept. 2021



Low influenza-like illness during the 2020-2021 season may be attributed to the public health measures such as mask usage and social distancing put in place to prevent COVID-19 transmission.

The Kansas Health and Environmental Laboratories did not report any influenza positive specimens during the 2020-2021 season.

To learn more about influenza surveillance in Kansas visit www.kdheks.gov/flu/surveillance.htm.
Data on this website are updated weekly during the influenza surveillance season.